

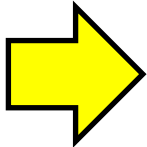
Student Achievement 2025

The University of Pikeville evaluates success with respect to undergraduate student achievement consistent with its [mission](#). The institution documents successful student achievement in relation to its mission by monitoring such broad measures as level of career and leadership readiness, freshmen retention rate, number of degrees awarded, six-year baccalaureate graduation rate, and job placement rate. In addition, UPIKE measures student ***achievement of academic excellence*** by monitoring student performance rate in the specific programs of [Nursing](#), [Social Work](#), [Teacher Preparation](#), [Optometry](#), and [Osteopathic Medicine](#). The institution uses the combination of these findings to support and improve student achievement.

Creating a Pathway to higher education for all students who desire to embark upon that journey and attracting and retaining high caliber students who will be future regional, national, and global leaders



To help students focus on educational success, UPIKE continues to strive to be an affordable and economical provider of postsecondary educational services to the people of the region compared to other private universities in Kentucky. The University met this target with an average net price of [\\$13,512](#) for year 2023-2024.



The University is striving to have at least 50% of its new freshmen have ACT-Composite scores at or above the national average. The University made no progress with [46%](#) of the fall 2024 first-time freshmen having ACT-Composite scores of 21 or higher, which is lower than last year's cohort.



The University has programs in place to have at least 58% of its new freshmen return for their second year. The retention rate of first-time full-time freshmen to the University continued to meet this target for a sixth consecutive year with a [68%](#) rate for the fall 2023 cohort.

Preparing Graduates through quality academic programs, grounded in the liberal arts, and through involvement in community service, experiential learning, research, athletics, humanitarian efforts, and global outreach.



To prepare graduates, UPIKE strives for at least 80% of students to demonstrate mastery at (1) demonstrating career readiness and (2) demonstrating leadership skills. The University met this target with [87%](#) (career) and 90% (leadership) of students in the 2023-2024 academic year demonstrating mastery.



With the growth in undergraduate enrollment, the University seeks to have the number of undergraduate degrees awarded grow from 150 in 2010-2011 to 250 by 2020. UPIKE met this target with [282](#) undergraduate degrees awarded 2023-2024, an increase from last year.



The University wants to have at least 40% of its new freshmen graduate within six years. The six-year graduation rate of first-time freshmen to the University met this target with the rate increasing to [42%](#) (fall 2018 cohort).



The University expects at least 80% of its graduates to be employed full time or enrolled in graduate school within one year of graduation. UPIKE met this target with [100%](#) of undergraduate graduates from the Class of 2023 found full-time employment or enrolled in graduate programs within one year after graduation.

Statement of Mission

The University of Pikeville is the leading higher education institution of Central Appalachia. Founded in 1889, UPIKE remains steadfast in our commitment to preparing students for the future while creating intellectual, cultural, and economic opportunities for Appalachia. Maintaining our commitment to Christian principles, UPIKE recognizes the infinite worth of each person, respecting a variety of religious expressions.

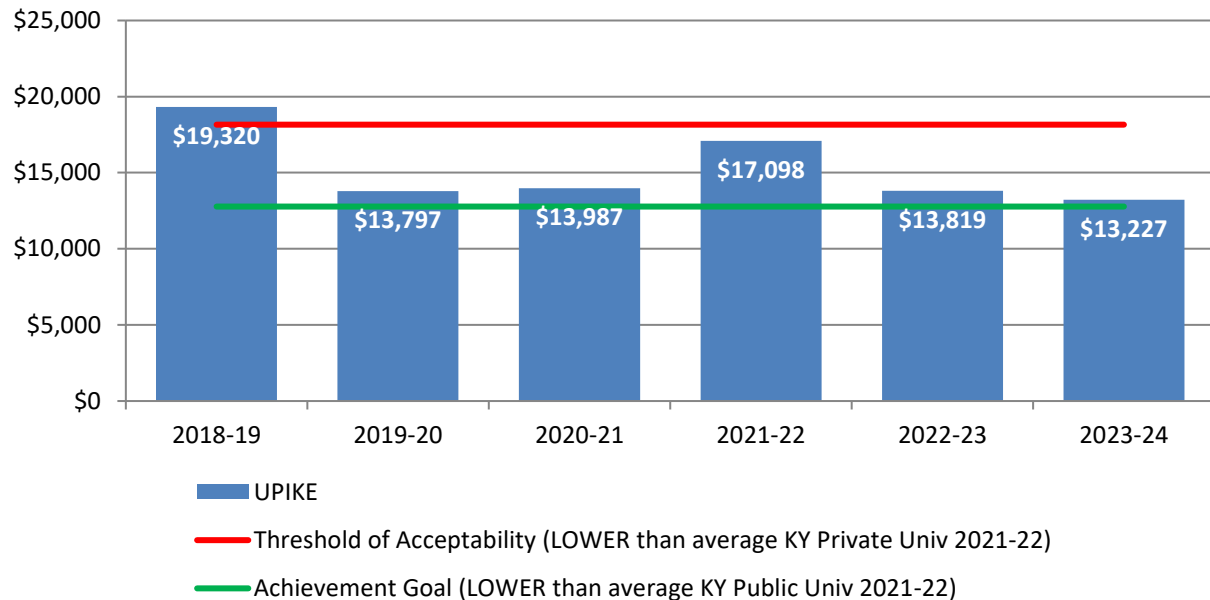
UPIKE achieves its mission by:

- Creating a pathway to higher education for all students who desire to embark upon that journey and attracting and retaining high caliber students who will be future regional, national, and global leaders.
- Preparing graduates through quality academic programs, grounded in the liberal arts, and through involvement in community service, experiential learning, research, athletics, humanitarian efforts, and global outreach.
- Achieving academic excellence by maintaining academic rigor and relevancy in undergraduate, graduate, and professional degree programs.
- Attracting and retaining distinguished faculty, staff, administrators, trustees, and alumni who are dedicated to meeting the individual needs of students, promoting a caring and supportive environment conducive to learning, and meeting the needs of an evolving University; and
- Providing superior infrastructure with state-of-the-art classrooms, clinics, instructional materials, physical facilities, technological infrastructure and campus amenities through sound fiscal policy and efficient and effective administrative services.

< [back to top](#) >

Creating a Pathway Outcome 1

Average institutional net price for Full-time, first-time degree/certificate-seeking undergraduate students awarded grant or scholarship aid from the federal government, state/local government, or the institution



Source: <https://nces.ed.gov/ipeds/use-the-data> Financial Aid Reports, Cost II Reports

Return on Investment: Is Attending UPIKE worth it?

Median Earnings (10 Years After Initial Enrollment) Compared to Value Thresholds

[KEY QUESTIONS](#)

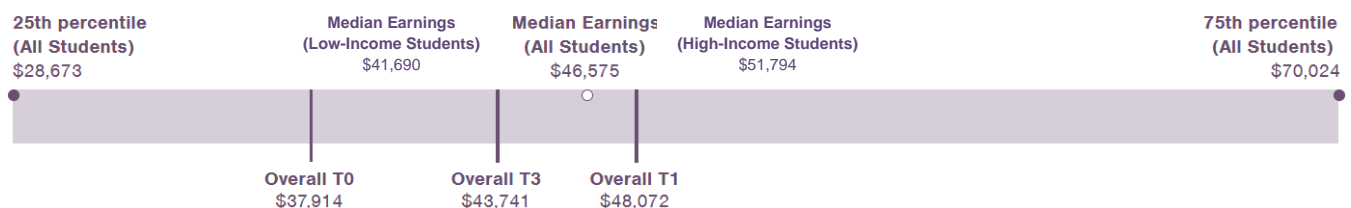
THRESHOLD DEFINITIONS

T0 Minimum Economic Return Median state-level high school earnings + total net price (annual net price times average time to credential) amortized over 10 years	T1 Earnings Premium Median earnings for credential level within state	T2 Earnings Parity Median earnings of advantaged peers (White, Male for credential level within state)	T3 Economic Mobility Earnings high enough to enter 4th (60th to 80th percentile) income quintile or above regardless of credential level within state
--	---	--	---

Overall Thresholds (Between-Group Differences)

Overall earnings

Overall thresholds, which are labeled below the bar chart, provide primary benchmarks for measuring the economic value that institutions provide to students relative to earnings among their state population. These thresholds provide a target for institutions to ensure that all students receive the same economic returns, regardless of race/ethnicity, income, or gender. Earnings are labeled above the bar chart and represent students' earnings ten years after enrolling in the selected institution. The default view compares overall thresholds with overall earnings; use the dropdown menu to see disaggregated median earnings by gender and income. Note that earnings data are suppressed in the College Scorecard for some subgroups.



Source: <https://postsecondaryvalue.org/>, last updated April 2023

University Student Debt to Earnings Rates

Graduating Class	2019	2020	2021	2022	2023	2024
Share of Bachelor degrees – UPIKE Initial Institution	70%	57%	58%	67%	62%	66%
On-time Graduation Rate	59%	65%	62%	69%	73%	76%
Students who Took out Loans	77%	79%	82%	69%	72%	72%
Median Loan Debt for those Students	\$24,742	\$23,080	\$25,736	\$24,744	\$24,740	\$26,720
Median Kentucky Wages 3 Years Post Graduation ¹	\$31,515	\$35,091				
Employed in Kentucky 3 Years Post Graduation ¹	50.0%	52.1%				
<i>Debt-to-Earnings Annual Rate ²</i>	10.9%	9.1%				

Sources: SEMXXX, AID060 Reports

Note: (1) The most recent year's information comes from the Postsecondary Feedback Report (PSFR) that was last updated March 2023, by the Kentucky Center for Statistics (KYSTATS) utilizing data from the Kentucky Longitudinal Data System (KLDS), 500 Mero St, Frankfort, KY; < <https://kystats.ky.gov/> > (retrieved 03/27/2023).
 (2) The Department of Education's passing threshold for this rate is for it to be less than or equal to 8%; failing is greater than 12%.

University Undergraduate Student Loan Default Rates

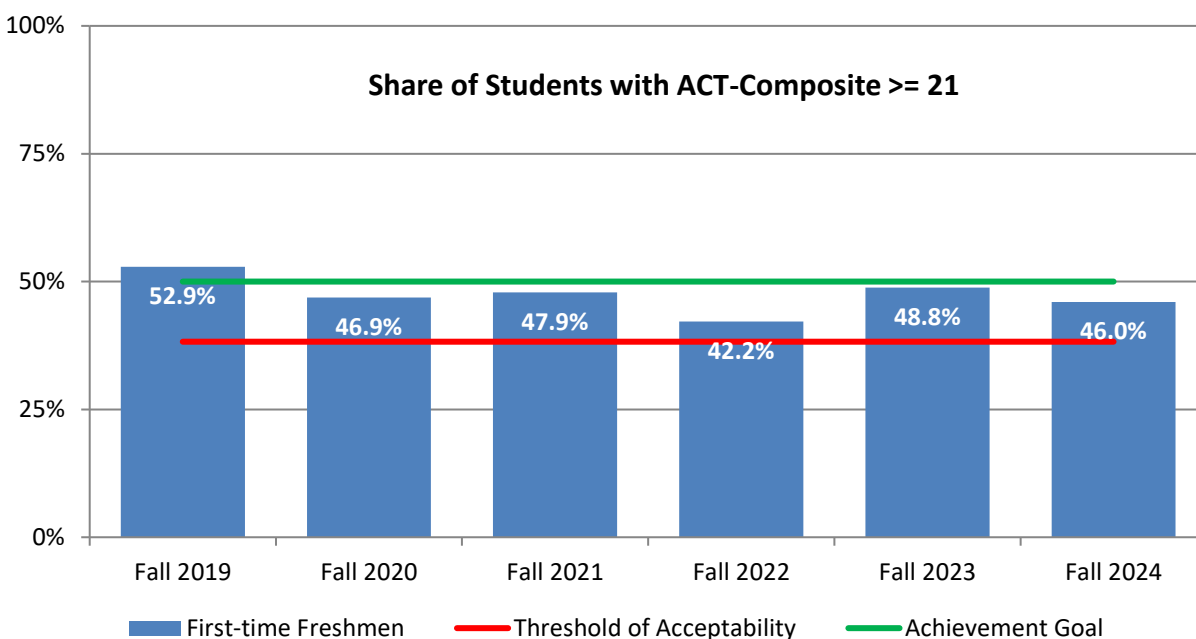
Fiscal Year	2017	2018	2019	2020	2021
Three-Year Cohort Default Rate	16.3	14.3	4.7	0.0	0.0
<i>Number of Students in Repayment ¹</i>	418	419	386	370	367
National Average Default Rate, FY2021 Private 4-yr (+) non-profit ²	0.0				

Sources: semXXX and SHCDREOP files

Notes: (1) Includes only undergraduate students who attended the University of Pikeville (College of Arts & Sciences, Coleman College of Business, and College of Nursing and Human Services).
 (2) FY 2020 and FY 2021 cohort default rates were significantly impacted by the pause on federal student loan payments that began March 13, 2020. During the pause, borrowers with ED-held student loans were not required to make any payments, and no borrowers with ED-held loans entered default. <https://fsapartners.ed.gov/knowledge-center/library/electronic-announcements/2023-09-29/national-default-rate-briefing-fy-2020-official-cohort-default-rates>

Creating a Pathway Outcome 2

Attracting High Caliber Undergraduate Students



The Threshold of Acceptability Rate is 38.2% which is the average for new freshmen entering the University from 2000-2015.

The Achievement Goal Rate is 50%.

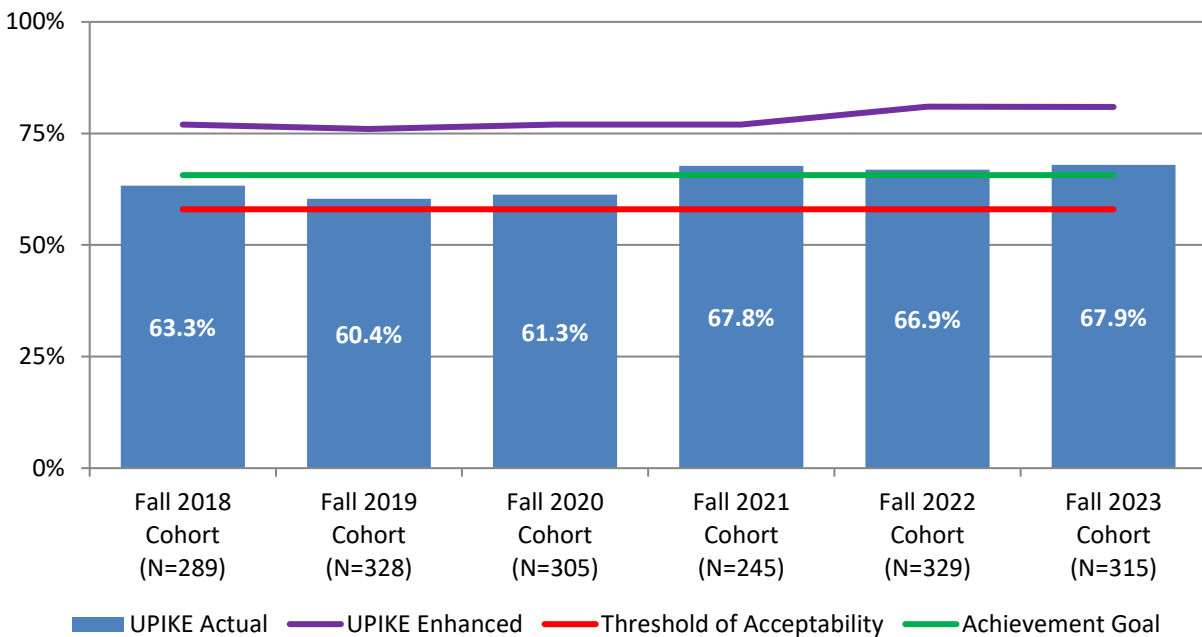
Share of First-time Freshmen with ACT-Composite ≥ 21 by Sub-group

	Fall 2019	Fall 2020	Fall 2021	Fall 2022	Fall 2023	Fall 2024
<u>Gender</u>						
Male	50.8%	41.4%	44.4%	39.3%	43.8%	43.5%
Female	55.9%	51.5%	50.9%	44.0%	52.5%	48.1%
<u>Race/Ethnicity</u>						
White	56.9%	50.6%	51.7%	44.2%	50.2%	47.8%
Black, non-Hispanic	32.7%	14.7%	6.3%	7.1%	14.3%	16.7%
Other	57.1%	55.6%	45.5%	40.0%	41.2%	50.0%
<u>Family Education Levels</u>						
First Generation	47.9%	36.5%	41.8%	35.1%	38.5%	35.9%
non-First Generation	56.0%	53.2%	50.7%	44.7%	53.1%	48.4%
<u>Financial Aid Recipients</u>						
Pikeville Promise	43.9%	32.7%	41.0%	14.6%	32.3%	40.9%
Pell Grant	47.5%	36.6%	37.1%	34.7%	39.7%	43.7%
Subsidized Stafford Loan, no Pell	54.6%	50.0%	46.2%	48.8%	55.6%	37.5%
Neither Pell or Sub Stafford Loan	70.2%	66.7%	67.2%	52.7%	62.7%	59.0%

< [back to top](#) >

Creating a Pathway Outcome 3

Retention Rates by Cohort



The Enhanced Retention Rate includes students who not only returned to the University of Pikeville, but who were reported to have enrolled within this time frame by the National Student Clearinghouse at another institution of higher education.

The Threshold of Acceptability Retention Rate is 58% which was the goal expressed after 5 years in our Title III Strengthening Institutions Grant for new freshmen entering the University fall 2018.

The Achievement Goal Retention Rate is 66% which was the average retention rate reported to US News for the 2021 survey for the custom comparison group chosen by University of Pikeville of 11 institutions.

Retention Rates for Full-Time New Freshmen by Sub-group

	Fall 2018	Fall 2019	Fall 2020	Fall 2021	Fall 2022	Fall 2023
Gender						
Male	58%	53%	50%	62%	57%	60%
Female	68%	70%	71%	74%	75%	75%
Race/Ethnicity						
White	63%	62%	65%	72%	69%	71%
Black, Non-Hispanic	63%	54%	38%	38%	43%	57%
Other	67%	57%	56%	67%	71%	47%
Family Education Levels						
First Generation	64%	55%	63%	56%	60%	62%
non-First Generation	63%	63%	61%	74%	69%	71%
Financial Aid Recipients						
Pikeville Promise	62%	59%	57%	63%	49%	54%
Pell Grant	62%	58%	57%	58%	61%	59%
Subsidized Stafford Loan, no Pell	67%	61%	69%	76%	64%	81%
Neither Pell or Sub Stafford Loan	67%	69%	69%	82%	81%	78%

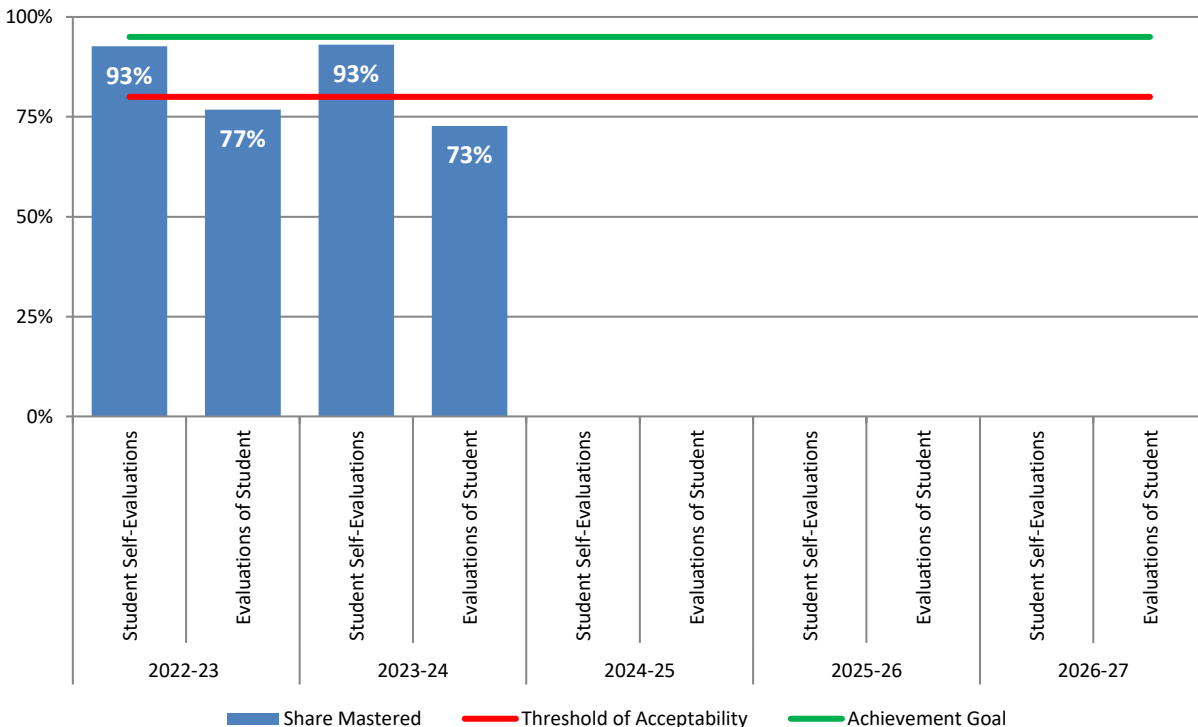
< [back to top](#) >

Preparing Graduates Outcome 1

The University of Pikeville's PEAK Career and Leadership Pathway is a comprehensive pathway program designed to allow students the opportunity to explore career options and gain leadership experience throughout their time on campus through activities and experiences embedded in their curricular and co-curricular programs.

Career Readiness

Students will demonstrate career readiness by being able to take the steps necessary to pursue careers and be a self-advocate for post-graduate opportunities.



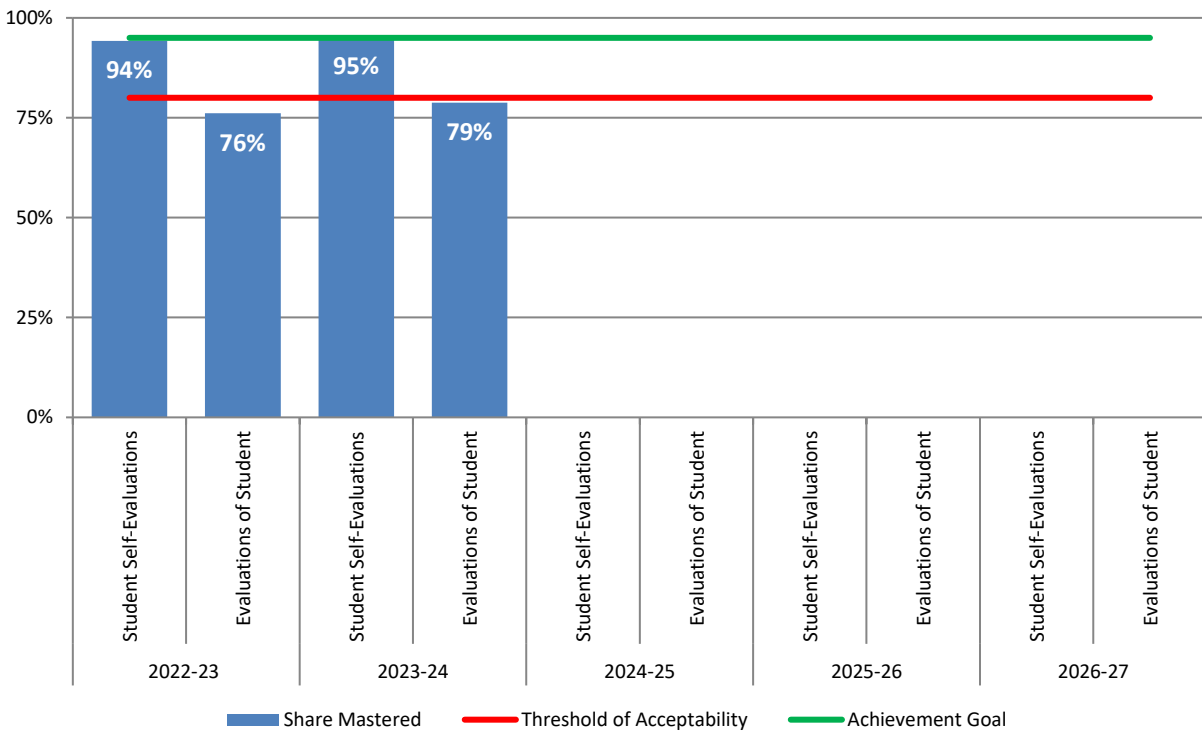
The Threshold of Acceptability is based on the baseline in our QEP from 2022.

Career Readiness Share Mastered by Sub-group, All Evaluations

	2022-23	2023-24	2024-25	2025-26	2026-27
<u>Gender</u>					
Male	80.9%	84.5%			
Female	88.4%	88.2%			
<u>Race/Ethnicity</u>					
White	86.4%	87.8%			
Black, non-Hispanic	74.2%	81.0%			
Other	85.8%	82.3%			
<u>Family Education Levels</u>					
First Generation	87.1%	88.1%			
non-First Generation	84.6%	86.3%			
<u>Classification</u>					
NSSE First Year Students	68.1%	82.2%			
NSSE Seniors	94.8%	91.9%			

Leadership

Students will demonstrate leadership skills including communication, professionalism, and teamwork via curricular and co-curricular experiences.



The Threshold of Acceptability is based on the baseline in our QEP from 2022.

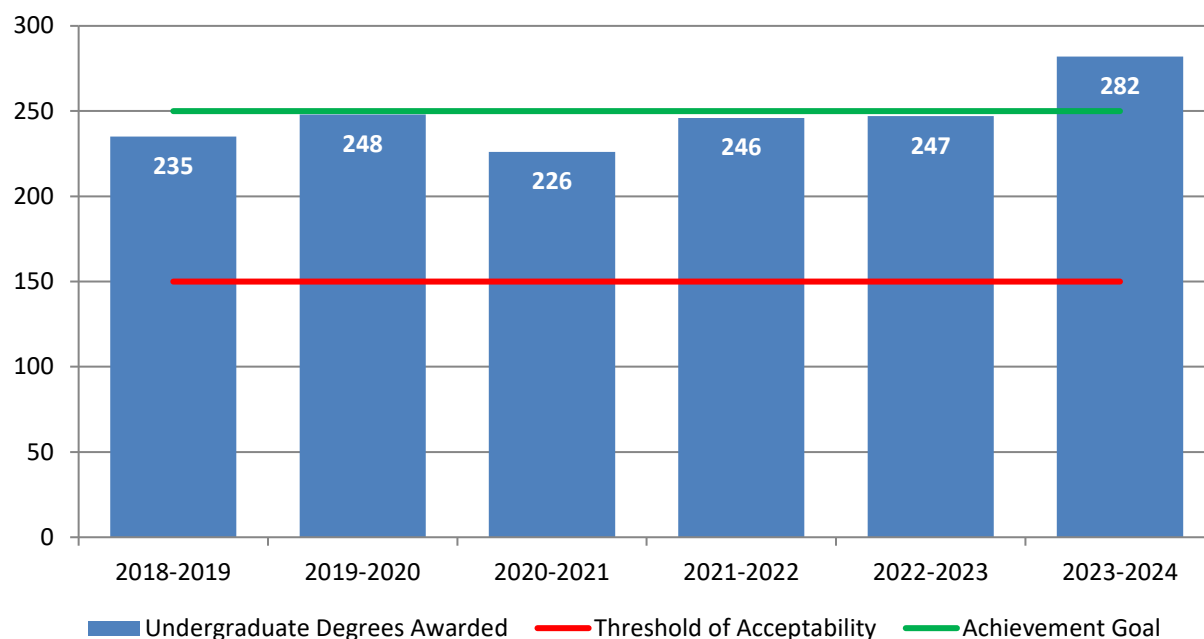
Leadership Share Mastered by Sub-group, All Evaluations

	2022-23	2023-24	2024-25	2025-26	2026-27
<u>Gender</u>					
Male	83.2%	89.1%			
Female	87.7%	91.0%			
<u>Race/Ethnicity</u>					
White	86.2%	90.9%			
Black, non-Hispanic	76.4%	89.7%			
Other	89.8%	86.2%			
<u>Family Education Levels</u>					
First Generation	84.8%	91.6%			
non-First Generation	86.2%	89.7%			
<u>Classification</u>					
NSSE First Year Students	63.5%	86.4%			
NSSE Seniors	94.2%	95.7%			

< [back to top](#) >

Preparing Graduates Outcome 2

Number of Undergraduate Degrees Awarded by Year



The Threshold of Acceptability number of degrees is based on the number of degrees awarded in 2010-2011, the time of the writing of the *Vision 2020* document.

The Achievement Goal number of degrees comes from the *Vision 2020* document.

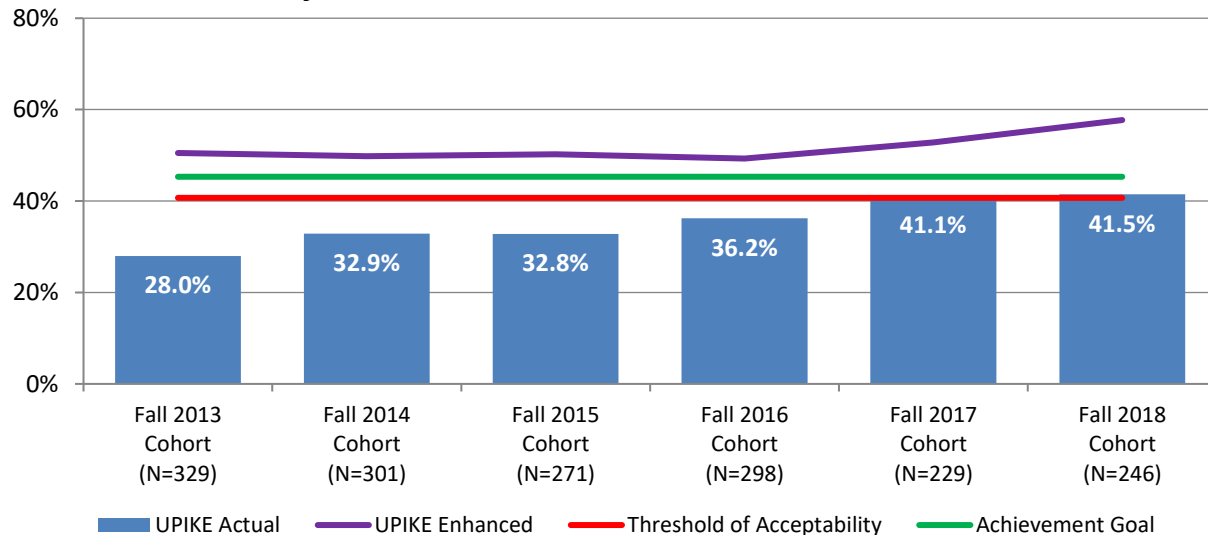
Share of Undergraduate Degrees Awarded by Year by Sub-group

	2018-2019	2019-2020	2020-2021	2021-2022	2022-2023	2023-2024
<u>Gender</u>						
Male	45.3%	38.6%	41.3%	41.4%	46.8%	38.3%
Female	†54.7%	†62.4%	†58.7%	†58.6%	53.2%	†61.7%
<u>Race/Ethnicity</u>						
White	†90.2%	†87.1%	83.6%	†88.3%	80.0%	81.9%
Black, non-Hispanic	6.1%	8.2%	10.1%	6.8%	10.9%	8.5%
Other	3.7%	4.7%	6.3%	4.9%	9.1%	9.6%
<u>Family Education Levels</u>						
First Generation	40.2%	28.8%	32.2%	34.7%	35.0%	32.6%
non-First Generation	59.8%	†71.2%	†67.8%	65.3%	65.0%	67.4%
<u>Financial Aid Recipients</u>						
Pikeville Promise	39.7%	39.5%	42.3%	35.1%	35.9%	27.3%
Pell Grant	67.8%	70.4%	†73.1%	†68.0%	†66.8%	†59.6%
Subsidized Stafford Loan, no Pell	16.8%	12.9%	10.6%	11.7%	13.6%	18.9%
Neither Pell or Sub Stafford Loan	15.4%	16.7%	16.3%	20.3%	19.6%	21.5%

† Higher than that sub-group's share of total enrollment in the general student population that year (>3%).

Preparing Graduates Outcome 3

Graduation Rates by Cohort



The Enhanced Graduation Rate includes students who not only graduated from the University of Pikeville, but who were reported to have graduated within this time frame by the National Student Clearinghouse at another institution of higher education.

The Threshold of Acceptability Graduation Rate threshold is the average graduation rate reported to US News for the 2021 survey for the custom comparison group chosen by University of Pikeville of 11 institutions.

The Achievement Goal Graduation Rate is the average graduation rate for small private schools (enrollments under 5,000) in the SE United States, IPEDS Data Center from most recent reporting date (Aug 31, 2017).

Selected SACSCOC Student Completion Indicator:

University of Pikeville	
Selected Student Completion Indicator: 6-year National Student Clearinghouse Total Completion Rate (As of: November 2016)	
Your Institution	49.3%
Peer Group's Average	52.6%
Number of peers your institution identified	11
Number of peers for which data available	6

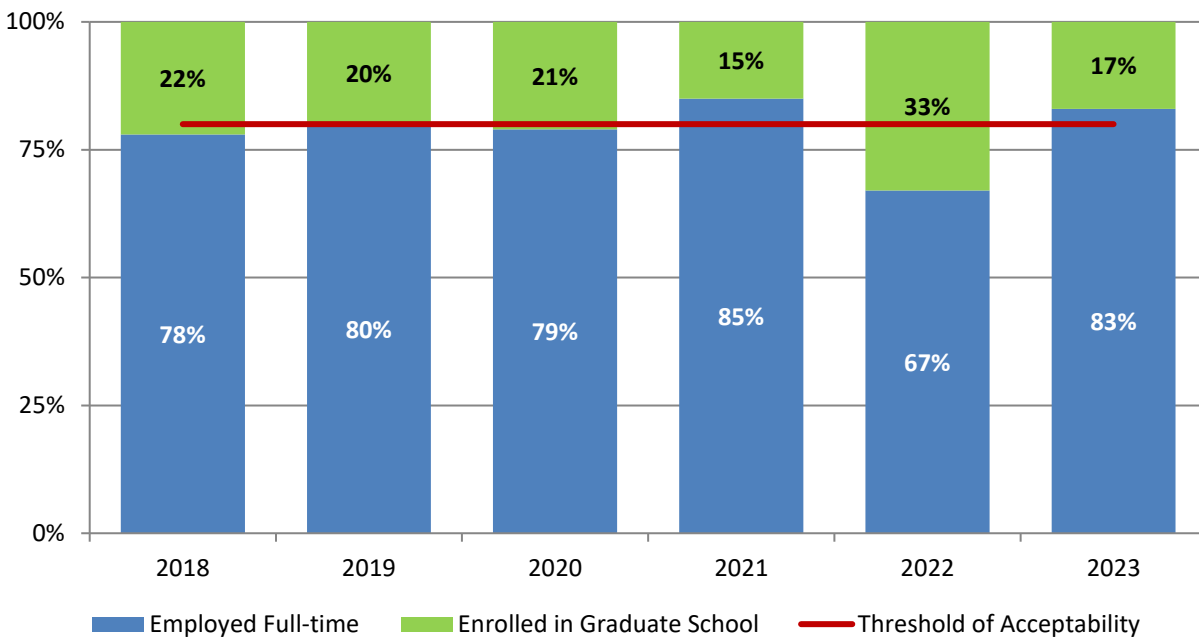
Graduation Rates for Full-Time, Baccalaureate Degree-seeking New Freshmen by Sub-group

	Fall 2013	Fall 2014	Fall 2015	Fall 2016	Fall 2017	Fall 2018
<u>Gender</u>						
Male	21%	28%	28%	32%	34%	36%
Female	37%	40%	38%	41%	52%	47%
<u>Race/Ethnicity</u>						
White	33%	37%	36%	37%	43%	42%
Black, non-Hispanic	6%	12%	25%	29%	30%	32%
Other	41%	27%	20%	50%	43%	57%
<u>Family Education Levels</u>						
First Generation	25%	31%	33%	25%	38%	40%
non-First Generation	30%	34%	33%	43%	43%	42%
<u>Financial Aid Recipients</u>						
Pikeville Promise	23%	31%	42%	29%	39%	34%
Pell Grant	23%	25%	32%	29%	38%	39%
Subsidized Stafford Loan, no Pell	35%	44%	26%	46%	42%	50%
Neither Pell or Sub Stafford Loan	44%	52%	40%	53%	53%	46%

< [back to top](#) >

Preparing Graduates Outcome 4

Placement Rates by Class



Data comes from University of Pikeville Alumni Survey One Year after Graduation. Percentages based on unduplicated responses. Because the survey is anonymous, the data cannot be disaggregated.

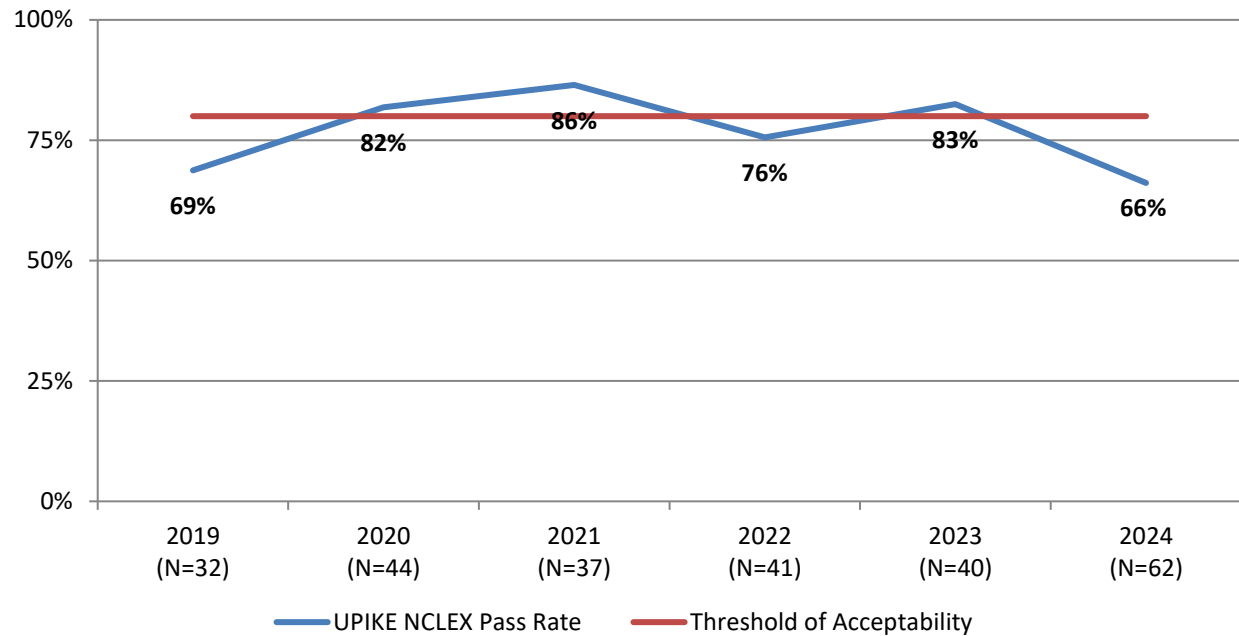
The Threshold of Acceptability Placement Rate is 80% of graduates as determined by the University Planning Committee.

The Achievement Goal Placement Rate is 100%.

< [back to top](#) >

Associate Degree of Nursing Program

UPIKE NCLEX First-time Pass Rates by Class



The Threshold of Acceptability Pass Rate is 80% of program completers, which is the Kentucky minimum required pass rate.

The Achievement Goal Pass Rate is 100%.

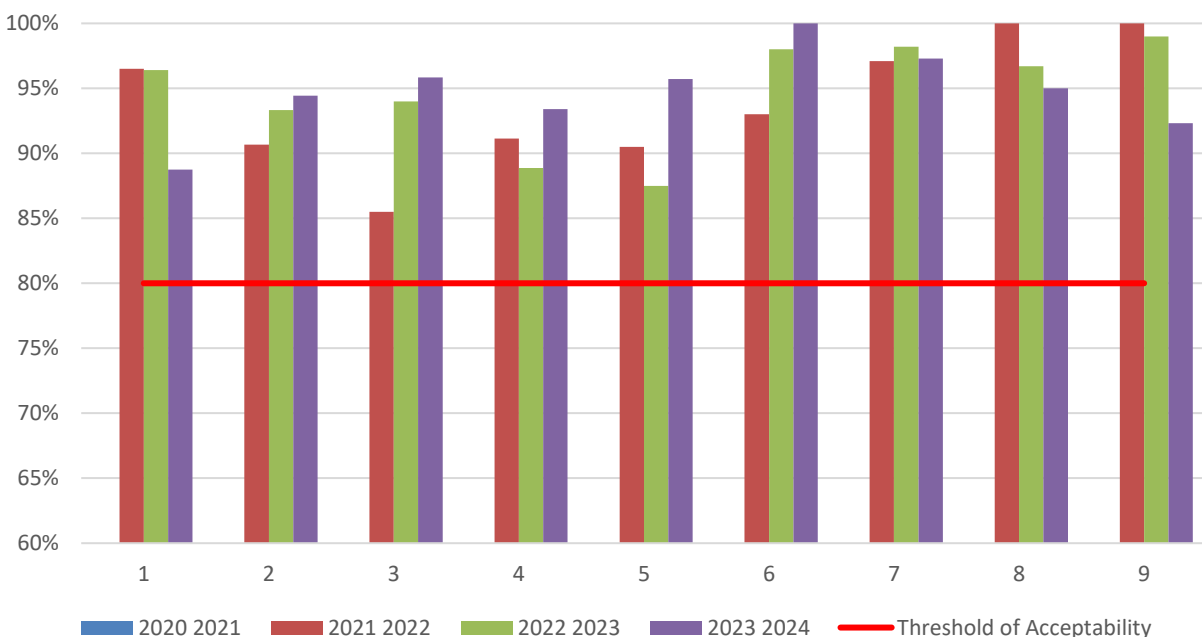
< [back to top](#) >

Social Work Program, Baccalaureate Level

Share of the Competencies that UPIKE Graduates Achieved Benchmarks: Comprehensive Exam and Practicum Student Final Evaluation by Supervisors

	2020 2021	2021 2022	2022 2023	2023 2024
Competency 1: Demonstrate Ethical and Professional Behavior		96.5%	96.4%	88.8%
Competency 2: Engage Diversity and Difference in Practice		90.7%	93.3%	94.4%
Competency 3: Advance Human Rights and Social, Economic, and Environmental Justice		85.5%	94.0%	95.8%
Competency 4: Engage in Practice Informed Research and Research Informed Practice		91.1%	88.9%	93.4%
Competency 5: Engage in Policy Practice		90.5%	87.5%	95.7%
Competency 6: Engage with Individuals, Families, Groups, Organizations, and Communities		93.0%	98.0%	100.0%
Competency 7: Assess Individuals, Families, Groups, Organizations and Communities		97.1%	98.2%	97.3%
Competency 8: Intervene with Individuals, Families, Groups, Organizations, and Communities		100.0%	96.7%	95.0%
Competency 9: Evaluate Practice with Individuals, Families, Groups, Organizations, and Communities		100.0%	99.0%	92.3%
Number of Graduates:	1	7	12	12

The faculty determined Threshold of Acceptability to be that students will demonstrate mastery (achieve benchmark) in 80% of each competency. The Achievement Goal is 100% of students demonstrating mastery.



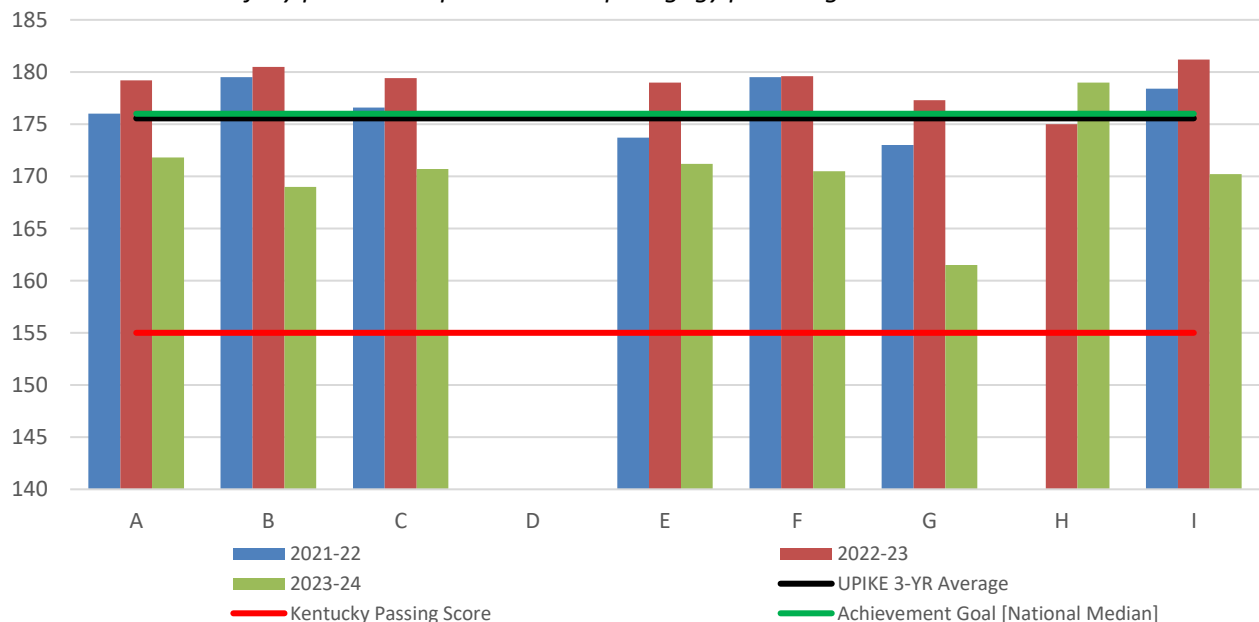
Traditional Teacher Preparation Program

UPIKE Principles of Teaching and Learning (Pedagogy Test), All Levels, by Class

	2021-22	2022-23	2023-24
	N = 12	N = 20	N = 20
Total Score, All Candidates	\bar{x} = 176.6 Range: 163-191	\bar{x} = 179.9 Range: 160-196	\bar{x} = 170.7 Range: 155-188
A. Total Score, Female Candidates	N = 10 Range: 163-191 \bar{x} = 176.0	N = 17 Range: 160-196 \bar{x} = 179.2	N = 12 Range: 155-188 \bar{x} = 171.8
B. Total Score, Male Candidates	N = 2 Range: 171-188 \bar{x} = 179.5	N = 3 Range: 180-189 \bar{x} = 183.3	N = 8 Range: 160-180 \bar{x} = 169.0
C. Total Score, Caucasian Candidates	N = 12 Range: 163-191 \bar{x} = 176.6	N = 20 Range: 160-196 \bar{x} = 179.4	N = 20 Range: 155-188 \bar{x} = 170.7
D. Total Score, Minority Candidates	N = 0 Range: -- \bar{x} = --	N = 0 Range: -- \bar{x} = --	N = 0 Range: -- \bar{x} = --
E. Total Score, First-Generation Candidates	N = 6 Range: 163-188 \bar{x} = 173.7	N = 7 Range: 160-190 \bar{x} = 179.0	N = 5 Range: 162-180 \bar{x} = 171.2
F. Total Score, non-First-Generation Candidates	N = 6 Range: 171-191 \bar{x} = 179.5	N = 13 Range: 165-196 \bar{x} = 180.3	N = 15 Range: 155-188 \bar{x} = 170.5
G. Total Score, Poor Candidates	N = 4 Range: 163-188 \bar{x} = 173.0	N = 4 Range: 160-196 \bar{x} = 177.3	N = 2 Range: 160-163 \bar{x} = 161.5
H. Total Score, Near Poor Candidates	N = 0 Range: -- \bar{x} = --	N = 3 Range: 165-181 \bar{x} = 175.0	N = 3 Range: 171-188 \bar{x} = 179.0
I. Total Score, Not Poor Candidates	N = 8 Range: 171-191 \bar{x} = 178.4	N = 13 Range: 172-191 \bar{x} = 181.8	N = 15 Range: 155-180 \bar{x} = 170.2

All minority candidates were African American, non-Hispanic. Students from poor families are defined as those living in families below the poverty threshold, based on family income and family size using the U.S. Census Bureau's poverty thresholds from the previous year for each of the candidate's entry term to the institution < <http://www.census.gov/data/tables/time-series/demo/income-poverty/historical-poverty-thresholds.html> >. Students from near-poor families are in families with incomes between 100 and 200 percent of the poverty threshold; students from not-poor families are in families with incomes 200 percent or greater (as defined by Child Trends DataBank, 2004).

All candidates successfully pass the required PRAXIS pedagogy prior to graduation.



[< back to top >](#)

Doctor of Optometry Program

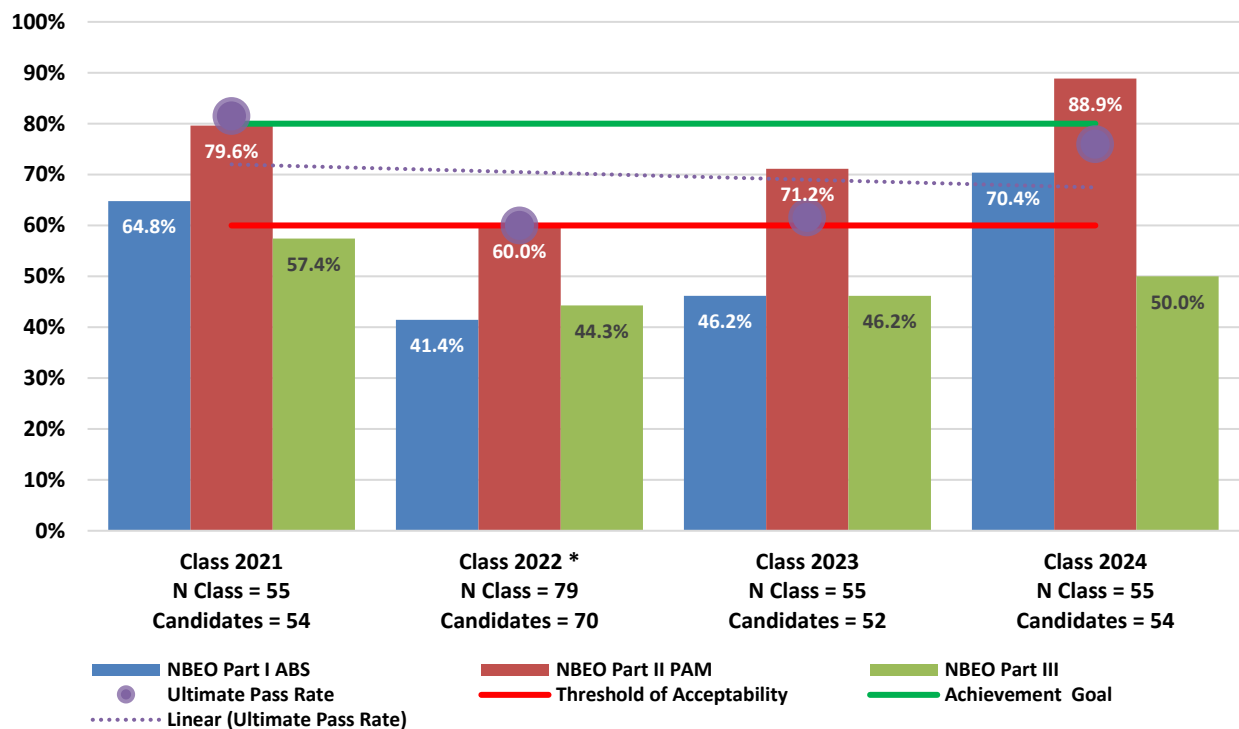
KYCO NBEO First-time Pass Rates by Class

Beginning November 15, 2021, while all matriculants continued to be encouraged to take and pass the National Board of Examiners in Optometry exams as they are the way to licensure in optometry, KYCO no longer requires that its optometry students pass the Part I (Applied Basic Science) Exam as part of their graduation requirements.

NBEO Institutional Yearly Performance Report

Graduates between:	Number of Candidates	First Timer Pass Rate			Ultimate Pass Rate
		Part I ABS	Part II PAM	Part III CSE	
October 1, 2019 – September 30, 2020	37	81.08%	91.89%	70.27%	91.89%
October 1, 2020 – September 30, 2021	54	64.81%	79.63%	57.41%	81.48%
October 1, 2021 – September 30, 2022	70	41.43%	60.00%	44.29%	60.00%
October 1, 2022 – September 30, 2023	52	46.15%	71.15%	46.15%	61.54%
October 1, 2023 – September 30, 2024	54	70.37%	88.89%	50.00%	75.93%

Source: <https://optometriceducation.org/news/national-board-of-examiners-in-optometry-yearly-performance-report/>



Source: Dean's Office, NBEO Board (as of 09/2024 test administrations)

First-time Pass Rates' Threshold of Acceptability was determined by the KYCO faculty based on the first three years of student performance (exam periods 2019, 2020, 2021)

The Achievement Goal is based on the national pass rate minimum expectation.

* Class of 2022 includes the remaining graduates from the Class 2020 whose degrees were on hold until requirement change.

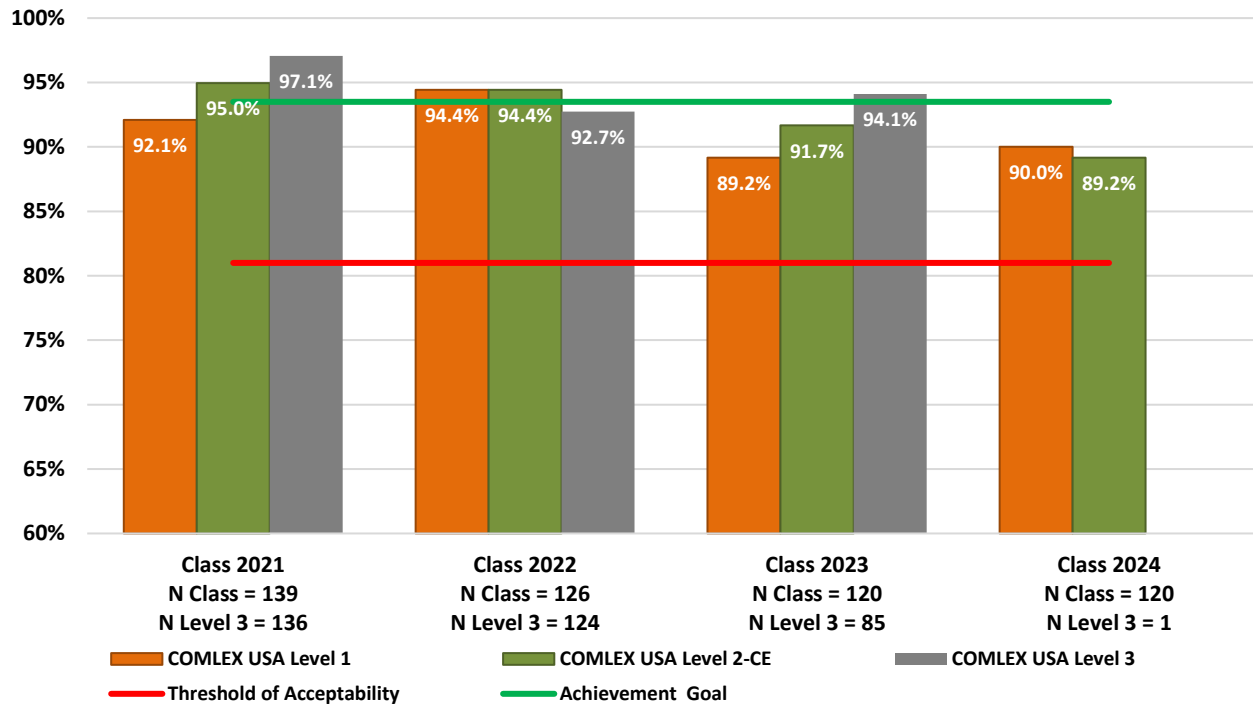
All pass rates are calculated using only candidates who have graduated during the listed time frame and have attempted all three parts at least once.

Ultimate pass rate is the percentage of the above-mentioned candidate group who passed all three exams within the listed time frame.

Doctor of Osteopathic Medicine Program

KYCOM COMLEX First-time Pass Rates by Class

KYCOM requires that its medical students take and pass the COMLEX Levels 1 and 2 CE board examinations as part of their graduation requirements. Following graduation and as part of residency training, KYCOM graduates also must pass the COMLEX-USA Level 3 examination.



Source: Student Scores, National Board of Osteopathic Medical Examiners, Inc. (09/24/2021)

The Threshold of Acceptability Pass Rate is 81% (lower CI95, Classes 2013-2017) for COMLEX USA Levels 1 and 2-CE. The faculty-determined Achievement Goal First-time Pass Rate is the 4-year average National First-time Pass rate (93.5%) of program completers.

Not all students who attempt COMLEX examinations graduate from KYCOM. In addition, exam testing periods do not always coincide with final KYCOM graduation cohorts. First-time pass rates on COMLEX examinations for all KYCOM students who attempted the examinations during these testing periods are as follows:

KYCOM COMLEX First-Time Pass Rates:

	2018-2019	2019-2020	2020-2021	2021-2022	2022-2023
COMPLEX LEVEL I	85.5%	93.9%	95.3%	84.4%	83.5%
COMPLEX LEVEL 2-CE	92.9%	93.6%	95.6%	92.7%	92.7%
COMPLEX LEVEL 2-PE	92.9%	92.6%	Clinical Skills Attestation	Clinical Skills Attestation	Clinical Skills Attestation
COMPLEX LEVEL 3	95.1%	92.9%	95.8%	98.6%	Not yet available

Source: <https://www.upike.edu/osteopathic-medicine/kycom-admissions/student-performance/> (10/25/2024)

< [back to top](#) >