

Student Achievement 2023

The University of Pikeville evaluates success with respect to undergraduate student achievement consistent with its [mission](#). The institution documents successful student achievement in relation to its mission by monitoring such broad measures as level of high impact practices, freshmen retention rate, number of degrees awarded, six-year baccalaureate graduation rate, and job placement rate. In addition, UPIKE measures student **achievement of academic excellence** by monitoring student performance rate in the specific programs of [Nursing](#), [Social Work](#), [Teacher Preparation](#), [Optometry](#), and [Osteopathic Medicine](#). The institution uses these findings to support and improve student achievement as part of its [strategic planning process](#).

Creating a Pathway to higher education for all students who desire to embark upon that journey and attracting and retaining high caliber students who will be future regional, national, and global leaders



To help students focus on educational success, UPIKE continues to strive to be an affordable and economical provider of postsecondary educational services to the people of the region. The University met this target by maintaining annual tuition and fees at a rate lower than those of the comparable institutions in Kentucky: [\\$23,150](#) for 2022-2023.



As high school grade point averages is a better predictor of first term student success for UPIKE new freshmen, the University is striving to have at least 60% of its new freshmen have high school GPAs at or above 3.50. The University continued to make progress on this target with [59%](#) of the fall 2022 first-time freshmen having high school GPAs of at least 3.50.



The University has programs in place to have at least 58% of its new freshmen return for their second year. The retention rate of first-time full-time freshmen to the University continued to meet this target for a fifth consecutive year with a [68%](#) rate for the fall 2021 cohort.

Preparing Graduates through quality academic programs, grounded in the liberal arts, and through involvement in community service, experiential learning, research, athletics, humanitarian efforts, and global outreach.



To prepare graduates, UPIKE strives for at least 80% of students to have participated in High-Impact Practices before graduation. The University continued to meet this target in Spring 2022 with [84%](#) of graduating seniors responding that they had participated in at least one such activity.



With the growth in undergraduate enrollment, the University seeks to have the number of undergraduate degrees awarded grow from 150 in 2010-2011 to 250 by 2020. UPIKE made progress on this target with [246](#) undergraduate degrees awarded 2021-2022, an increase from the previous year.



The University wants to have at least 45% of its new freshmen graduate within six years. The six-year graduation rate of first-time freshmen to the University made progress with the rate increasing to [36%](#) (fall 2016 cohort), which is higher than the previous five years' cohorts.



The University expects at least 80% of its graduates to be employed full time or enrolled in graduate school within one year of graduation. UPIKE met this target as [100%](#) of undergraduate graduates from the Class of 2021 found full-time employment or enrolled in graduate programs within one year after graduation.

Note: Similar information is available by individual undergraduate program by viewing the respective *Learn more about XXX graduates* popup on the University's website.

Statement of Mission

The University of Pikeville is the leading higher education institution of Central Appalachia. Founded in 1889, UPIKE remains steadfast in our commitment to preparing students for the future while creating intellectual, cultural, and economic opportunities for Appalachia. Maintaining our commitment to Christian principles, UPIKE recognizes the infinite worth of each person, respecting a variety of religious expressions.

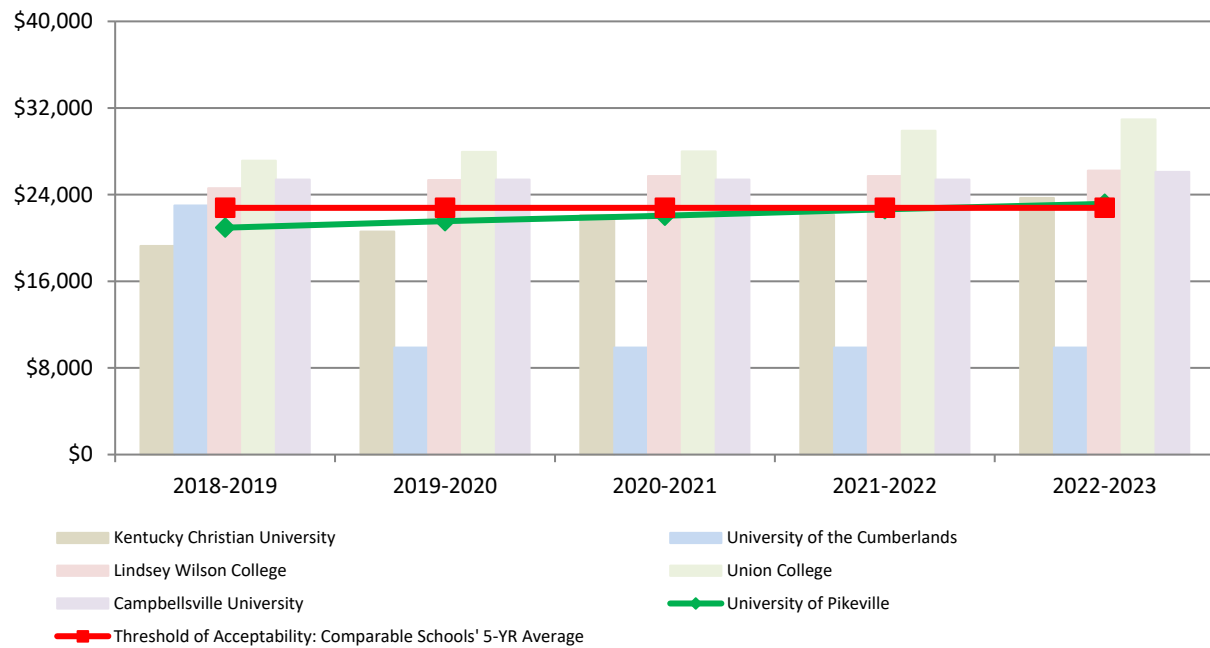
UPIKE achieves its mission by:

- Creating a pathway to higher education for all students who desire to embark upon that journey and attracting and retaining high caliber students who will be future regional, national, and global leaders.
- Preparing graduates through quality academic programs, grounded in the liberal arts, and through involvement in community service, experiential learning, research, athletics, humanitarian efforts, and global outreach.
- Achieving academic excellence by maintaining academic rigor and relevancy in undergraduate, graduate, and professional degree programs.
- Attracting and retaining distinguished faculty, staff, administrators, trustees, and alumni who are dedicated to meeting the individual needs of students, promoting a caring and supportive environment conducive to learning, and meeting the needs of an evolving University; and
- Providing superior infrastructure with state-of-the-art classrooms, clinics, instructional materials, physical facilities, technological infrastructure and campus amenities through sound fiscal policy and efficient and effective administrative services.

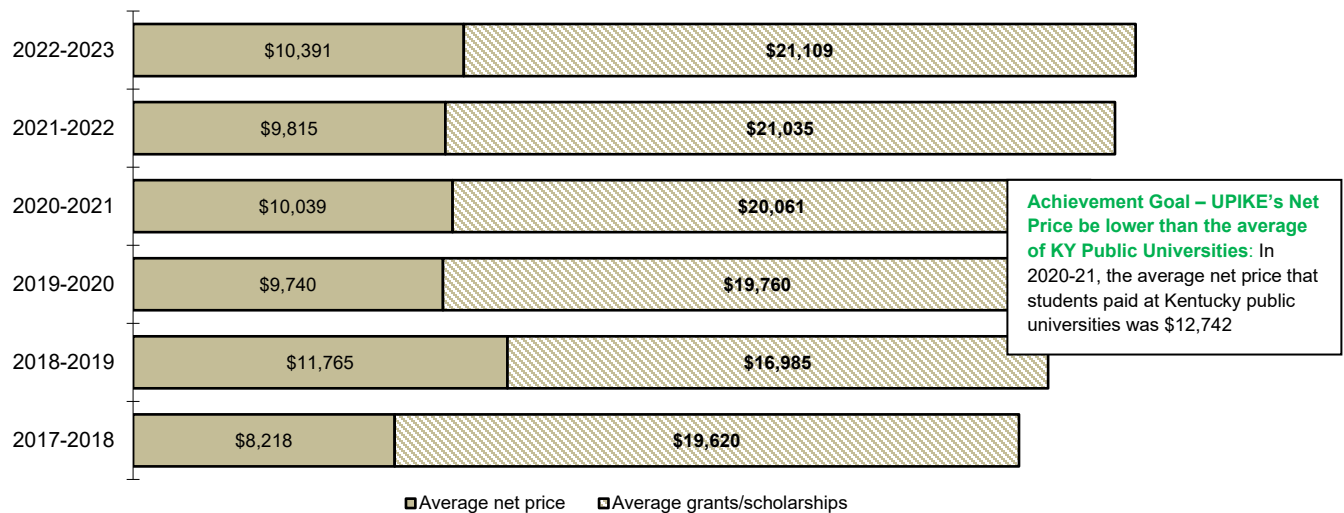
< [back to top](#) >

Creating a Pathway Outcome 1

Tuition Costs



College Net Price, UPIKE

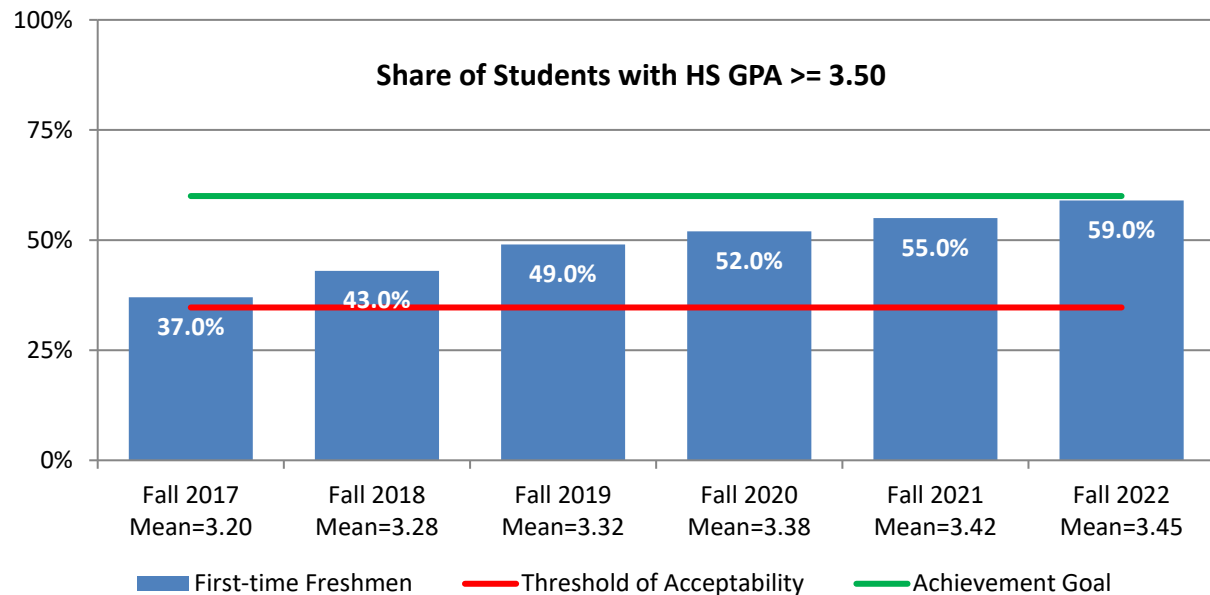


Total Disbursements (AID060 reports) for academic years 2018-2022 calculated only on those full-time undergraduate students who were enrolled at least nine months who lived on campus. AY 2023 figures (from AID060 report 10/18/2022) are estimates based on awards and fall 2022 undergraduate student enrollment intentions. Totals do not include self-help aid (e.g., work study or student loans). State data from IPEDS Data Center (01/10/2023).

< [back to top](#) >

Creating a Pathway Outcome 2

Attracting High Caliber Undergraduate Students



The Threshold of Acceptability Rate is 34.7% which is the average for new freshmen entering the University from 2007-2016.

The Achievement Goal Rate is 60%.

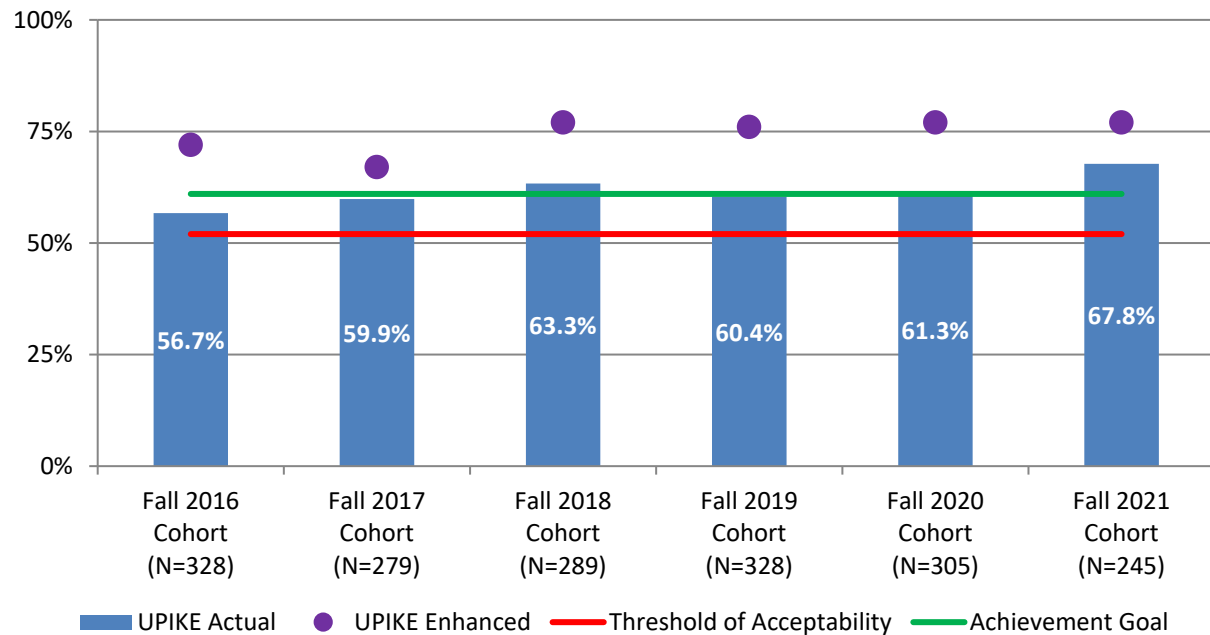
Share of New Freshmen with HS GPA ≥ 3.50 by Sub-group

	Fall 2017	Fall 2018	Fall 2019	Fall 2020	Fall 2021	Fall 2022
<u>Gender</u>						
Male	25%	30%	36%	35%	45%	44%
Female	51%	57%	64%	67%	67%	71%
<u>Race/Ethnicity</u>						
White	41%	45%	55%	59%	63%	66%
Black, Non-Hispanic	7%	29%	15%	6%	12%	4%
Other	31%	50%	43%	44%	39%	42%
<u>Pikeville Promise Recipient</u>	33%	35%	39%	43%	55%	14%

< [back to top](#) >

Creating a Pathway Outcome 3

Retention Rates by Cohort



The Enhanced Retention Rate includes students who not only returned to the University of Pikeville, but who were reported to have enrolled within this time frame by the National Student Clearinghouse at another institution of higher education.

The Threshold of Acceptability Retention Rate is 52% which was the baseline in our Title III Strengthening Institutions Grant for new freshmen entering the University.

The Achievement Goal Retention Rate is 61% which was the comparison group median (N=11) from our *IPEDS Data Feedback Report 2022*. SOURCE: U.S. Department of Education, National Center for Education Statistics, Integrated Postsecondary Education Data System (IPEDS): Spring 2022, Fall Enrollment.

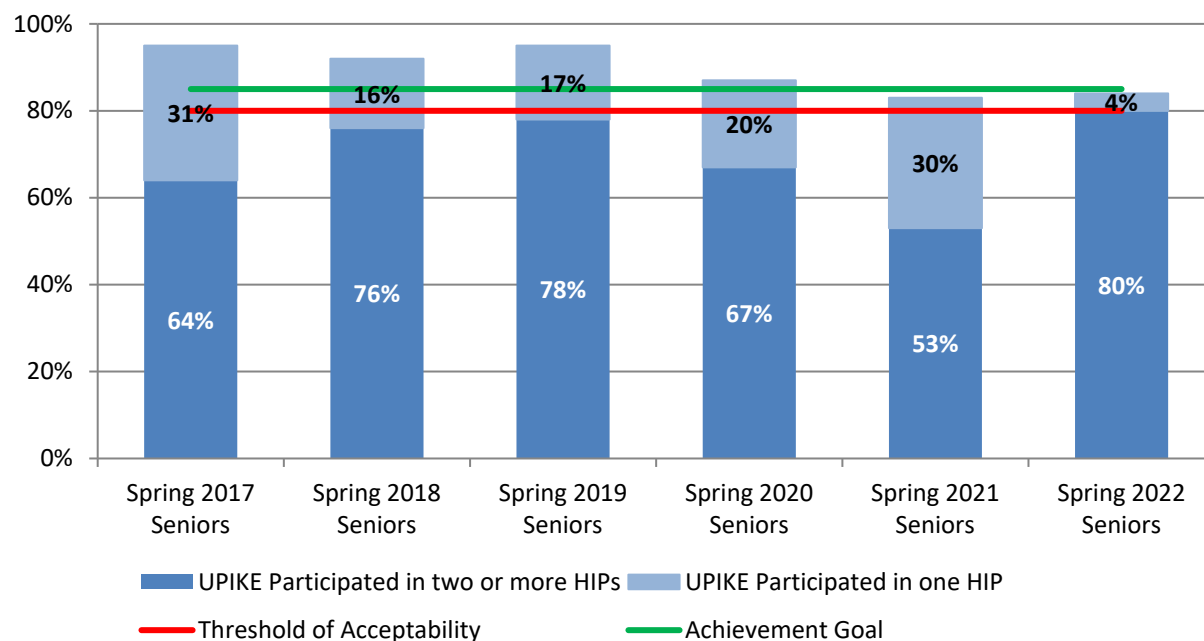
Retention Rates for Full-Time New Freshmen by Sub-group

	Fall 2016	Fall 2017	Fall 2018	Fall 2019	Fall 2020	Fall 2021
Gender						
Male	54%	54%	58%	53%	50%	62%
Female	60%	67%	68%	70%	71%	74%
Race/Ethnicity						
White	57%	61%	63%	62%	65%	72%
Black, Non-Hispanic	47%	53%	63%	54%	38%	38%
Other	80%	53%	67%	57%	56%	67%
Financial Aid Recipients						
Pikeville Promise	53%	56%	62%	59%	57%	63%
Pell Grant	52%	58%	62%	58%	57%	58%
Subsidized Stafford Loan, no Pell	57%	62%	67%	61%	69%	76%
Neither Pell or Sub Stafford Loan	79%	66%	67%	69%	69%	82%

< [back to top](#) >

Preparing Graduates Outcome 1

High-Impact Practice Participation by Class



Figures include participation in a learning community, service-learning, and research with faculty, an internship or field experience, study abroad, and culminating senior experience. The first segment in each bar shows the percentage of students who participated in at least two HIPs, and the full bar (both colors) represents the percentage who participated in at least one. SOURCE: National Survey of Student Engagement (NSSE).

The Threshold of Acceptability Participation Rate is 80% based on the baseline in our QEP from 2012.

The Achievement Goal Participation Rate is 85%, the average participation rate in at least one HIP activity for all other NSSE participating small private schools in the SE United States, 2022

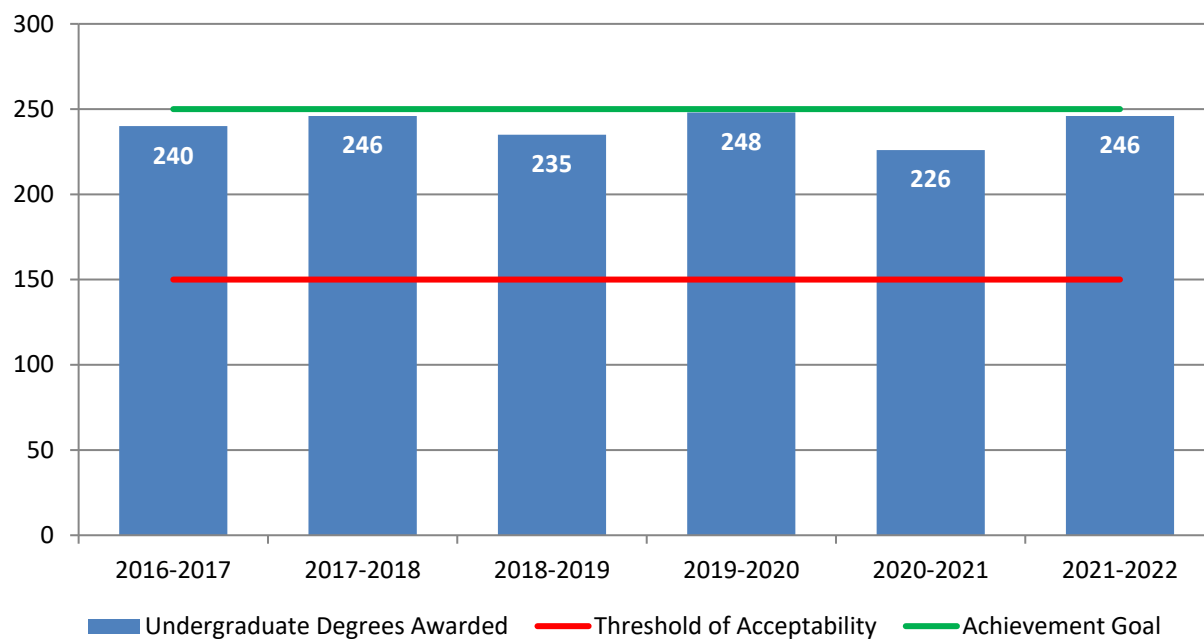
High-Impact Practice Participation in at Least One Activity of Seniors by Sub-group

	Spring 2017	Spring 2018	Spring 2019	Spring 2020	Spring 2021	Spring 2022
<u>Gender</u>						
Male	93%	91%	94%	75%	67%	67%
Female	97%	93%	93%	100%	94%	93%
<u>Race/Ethnicity</u>						
White	95%	93%	93%	90%	84%	84%
Black, Non-Hispanic	100%	100%	100%	100%	100%	---
Other	80%	67%	100%	33%	100%	100%

< [back to top](#) >

Preparing Graduates Outcome 2

Number of Undergraduate Degrees Awarded by Year



The Threshold of Acceptability number of degrees is based on the number of degrees award in 2010-2011, the time of the writing of the *Vision 2020* document.

The Achievement Goal 250, the number of degrees from the *Vision 2020* document.

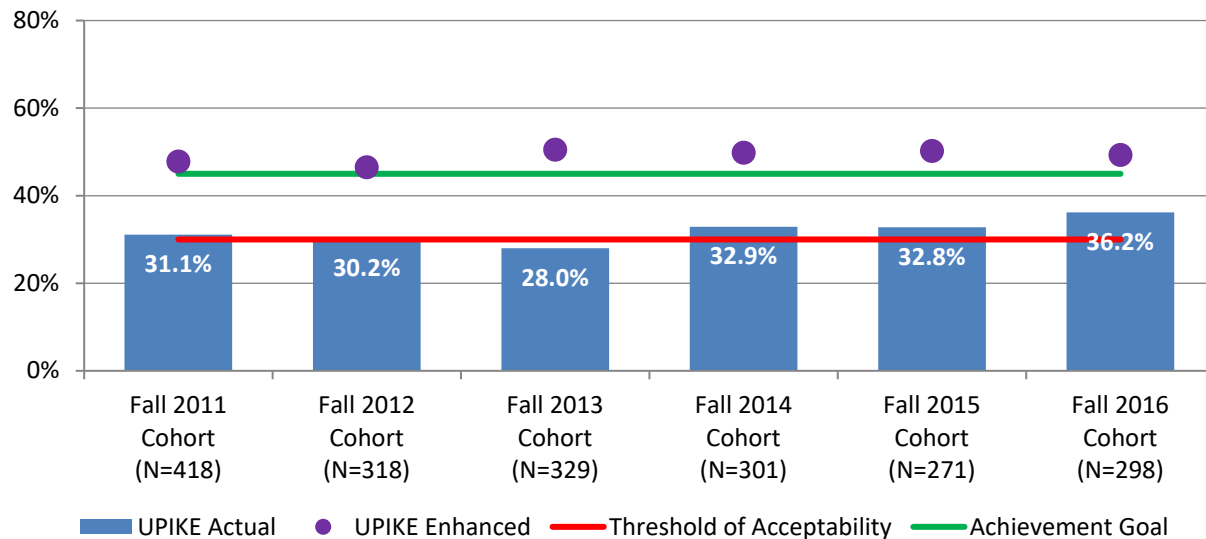
Number of Degrees Awarded by Sub-group

	2016-2017	2017-2018	2018-2019	2019-2020	2020-2021	2021-2022
Gender						
Male	106	98	105	96	95	103
Female	134	148	130	152	131	143
Race/Ethnicity						
White	210	227	212	216	188	216
Black, Non-Hispanic	16	9	15	20	22	17
Other	14	10	8	12	16	13
Financial Aid Recipients						
Pikeville Promise	37	57	36	36	40	32
Pell Grant	115	133	116	124	113	105
Subsidized Stafford Loan, no Pell	35	33	32	35	29	36
Neither Pell or Sub Stafford Loan	90	80	87	89	84	105

< [back to top](#) >

Preparing Graduates Outcome 3

Graduation Rates by Cohort



The Enhanced Graduation Rate includes students who not only graduated from the University of Pikeville, but who were reported to have graduated within this time frame by the National Student Clearinghouse at another institution of higher education.

The Threshold of Acceptability Graduation Rate threshold is 30%.

The Achievement Goal Graduation Rate is 45%, the median graduation rate from the comparison group (N=11) from our *IPEDS Data Feedback Report 2022*. SOURCE: U.S. Department of Education, National Center for Education Statistics, Integrated Postsecondary Education Data System (IPEDS): Winter 2021-22, Graduation Rates survey component.

Graduation Rates for Full-Time, Baccalaureate Degree-seeking New Freshmen by Sub-group

	Fall 2011	Fall 2012	Fall 2013	Fall 2014	Fall 2015	Fall 2016
Gender						
Male	20%	28%	21%	28%	28%	32%
Female	46%	37%	37%	40%	38%	41%
Race/Ethnicity						
White	34%	32%	33%	37%	36%	37%
Black, Non-Hispanic	14%	21%	6%	12%	25%	29%
Other	18%	32%	41%	27%	20%	50%
Financial Aid Recipients						
Pikeville Promise	30%	11%	23%	31%	42%	29%
Pell Grant	28%	24%	23%	25%	32%	29%
Subsidized Stafford Loan, no Pell	31%	36%	35%	44%	26%	46%
Neither Pell or Sub Stafford Loan	42%	47%	44%	52%	40%	53%

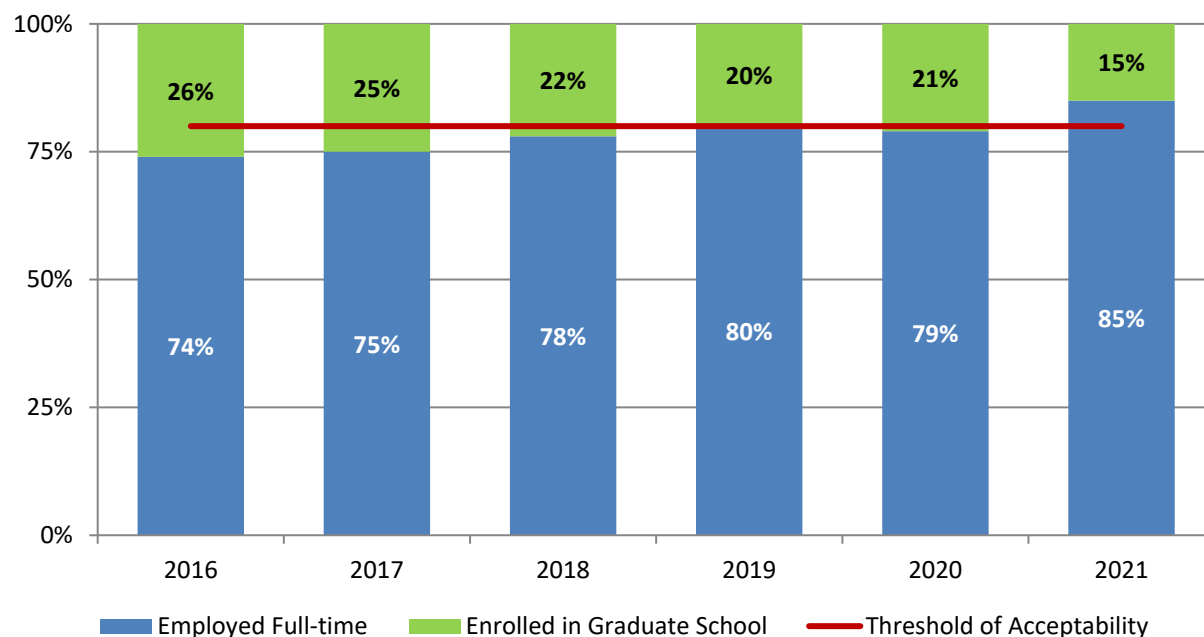
Selected SACSCOC Student Completion Indicator:

University of Pikeville	
Selected Student Completion Indicator: 6-year National Student Clearinghouse Total Completion Rate (As of: November 2016)	
Your Institution	49.3%
Peer Group's Average	52.6%
Number of peers your institution identified	11
Number of peers for which data available	6

[< back to top >](#)

Preparing Graduates Outcome 4

Placement Rates by Class



Data comes from University of Pikeville Alumni Survey One Year after Graduation. Percentages based on unduplicated responses. Rates cannot be disaggregated because the information from the survey is anonymous.

The Threshold of Acceptability Placement Rate is 80% of graduates as determined by the University Planning Committee.

The Achievement Goal Placement Rate is 100%.

Gainful Employment Information of Graduates

Graduating Class	2017	2018	2019	2020	2021	2022
Share of Bachelor's degrees – UPIKE Initial Institution	64%	60%	70%	57%	58%	67%
On-time Graduation Rate	53%	63%	59%	65%	62%	69%
Students who Took out Loans	82%	72%	77%	79%	82%	69%
Median Loan Debt for those Students	\$25,732	\$25,482	\$24,742	\$24,054	\$25,059	\$24,744
Median KY Wages 3 Years Post Graduation ¹	\$27,129	\$29,901				
Employed in KY 3 Years Post Graduation ¹	52.1%	51.9%				
<i>Debt-to-Earnings Annual Rate ²</i>	13.1%	11.8%				

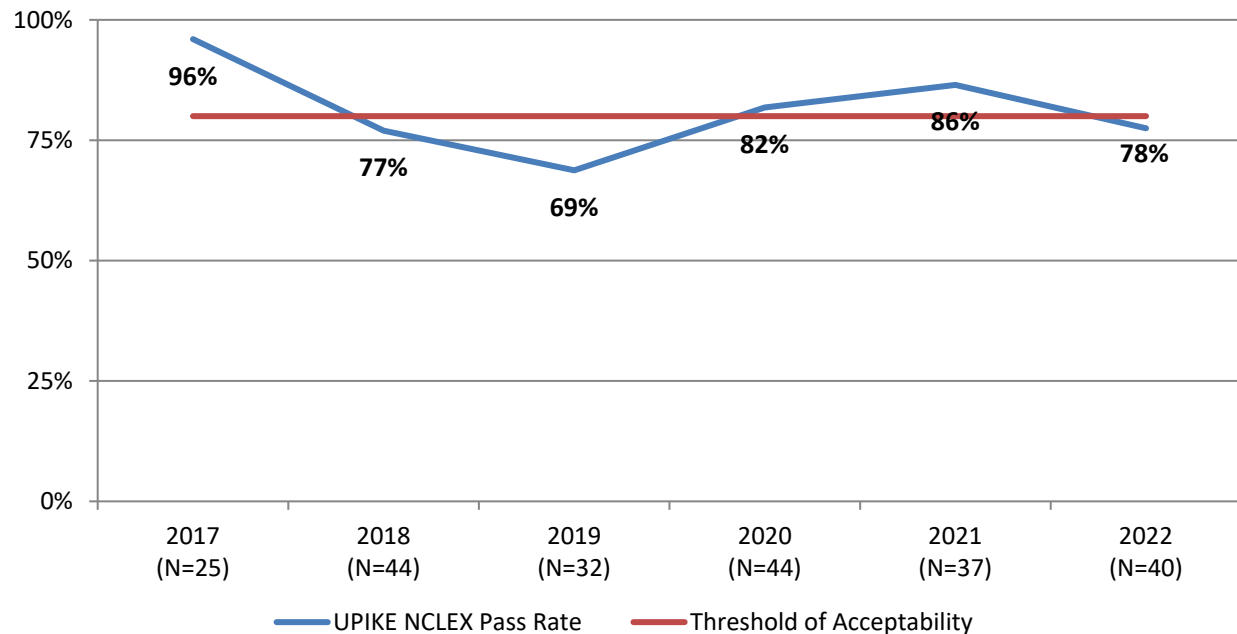
Note: (1) This information comes from the Postsecondary Feedback Report (PSFR) that was last updated March, 2021, Kentucky Center for Education & Workforce Statistics, 603 Wilkinson Blvd, Frankfort, KY. (Retrieved 05/17/2022 <https://kcews.ky.gov/Reports>)

(2) The Department of Education's passing threshold for this rate is for it to be less than or equal to 8%; failing is greater than 12%.

< [back to top](#) >

Associate Degree of Nursing Program

UPIKE NCLEX First-time Pass Rates by Class



The Threshold of Acceptability Pass Rate is 80% of program completers, which is the Kentucky minimum required pass rate.
The Achievement Goal Pass Rate is 100%.

Analysis from Dean, College of Nursing and Human Services, most recent annual report: *The class of 2021 (n=37) had a first-time pass rate of 86.48% on the NCLEX-RN, with five students being unsuccessful on their first attempt. This is an increase of 4 percentage points over the previous year, and above the Kentucky Board of Nursing benchmark annual pass rate of 80%. This improvement results in the last two years being above the Kentucky benchmark. NUR 290 "Preparing for NCLEX" was again required of all graduating students to help ensure success. As part of this pass/fail course, students were required to attend a three-day Kaplan NCLEX review during the week after graduation. The course was led by Dawnetta Marcum in Spring 2021. With respect to gender, only one male student (1/8) in the class of 2021 was unsuccessful for a rate of 12.5%. This continues our second year of improvement in male students. 100% of the male students (n=7) in the class of 2019 were unsuccessful on the NCLEX, and 28.57% (2/7) of male students in the class of 2020 were.*

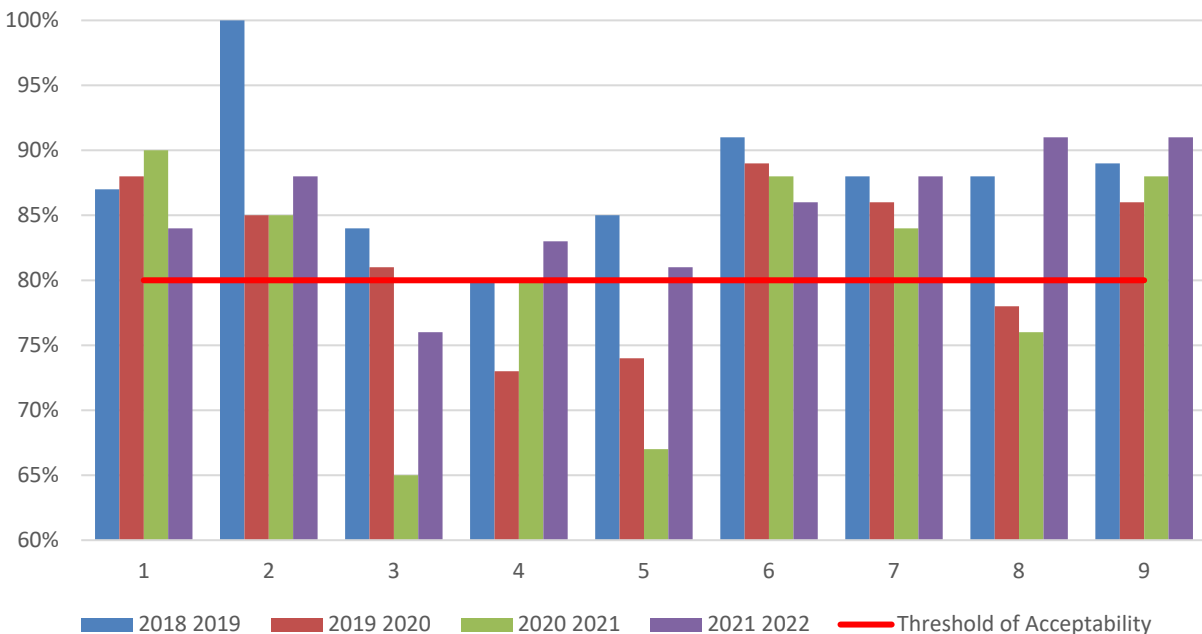
< [back to top](#) >

Social Work Program, Baccalaureate Level

Share of the Competencies that UPIKE Graduates Achieved Benchmarks: Comprehensive Exam and Practicum Student Final Evaluation by Supervisors

	2018 2019	2019 2020	2020 2021	2021 2022
Competency 1: Demonstrate Ethical and Professional Behavior	87%	88%	90%	84%
Competency 2: Engage Diversity and Difference in Practice	100%	85%	85%	88%
Competency 3: Advance Human Rights and Social, Economic, and Environmental Justice	84%	81%	65%	76%
Competency 4: Engage in Practice Informed Research and Research Informed Practice	80%	73%	80%	83%
Competency 5: Engage in Policy Practice	85%	74%	67%	81%
Competency 6: Engage with Individuals, Families, Groups, Organizations, and Communities	91%	89%	88%	86%
Competency 7: Assess Individuals, Families, Groups, Organizations and Communities	88%	86%	84%	88%
Competency 8: Intervene with Individuals, Families, Groups, Organizations, and Communities	88%	78%	76%	91%
Competency 9: Evaluate Practice with Individuals, Families, Groups, Organizations, and Communities	89%	86%	88%	91%
Number of Graduates:	9	7	2	7

The faculty determined Threshold of Acceptability to be that students will demonstrate mastery (achieve benchmark) in 80% of each competency. The Achievement Goal is 100% of students demonstrating mastery.



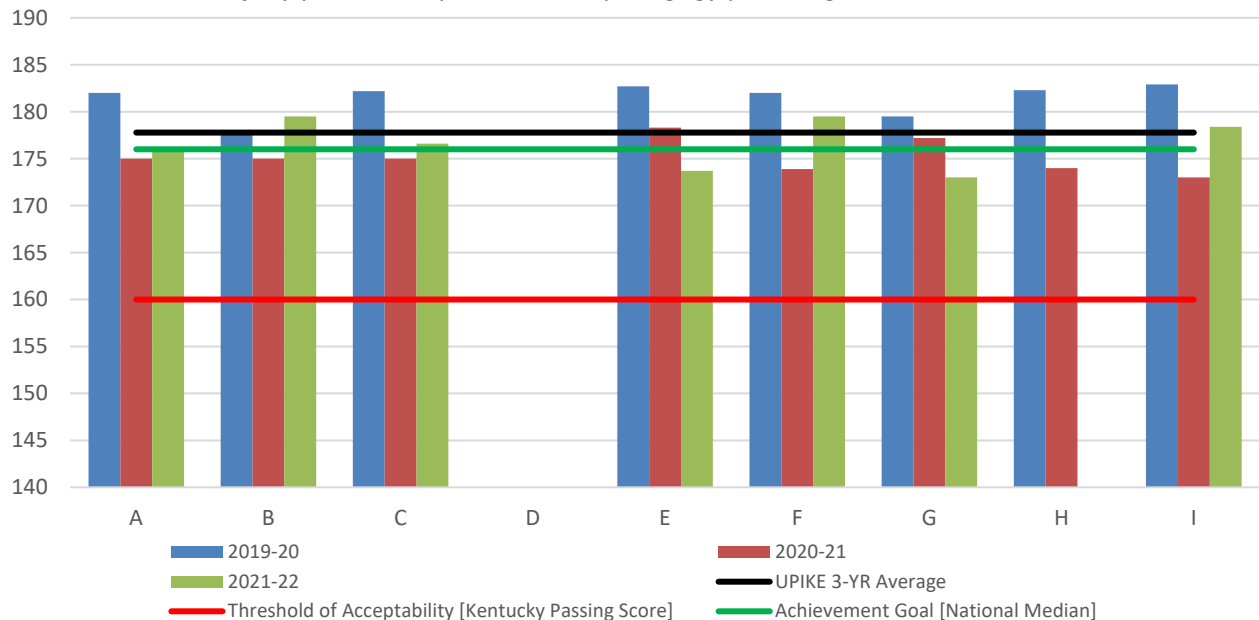
Traditional Teacher Preparation Program

UPIKE Principles of Teaching and Learning (Pedagogy Test), All Levels, by Class

	2019-20	2020-21	2021-22
	N = 12	N = 14	N = 12
Total Score, All Candidates	\bar{x} = 182 Range: 172-189	\bar{x} = 175 Range: 160-189	\bar{x} = 177 Range: 163-191
A. Total Score, Female Candidates	N = 11 Range: 172-189 \bar{x} = 182.6	N = 12 Range: 160-189 \bar{x} = 175.0	N = 10 Range: 163-191 \bar{x} = 176.0
B. Total Score, Male Candidates	N = 1 Range: 178.0	N = 2 Range: 172-178 \bar{x} = 175.0	N = 2 Range: 171-188 \bar{x} = 179.5
C. Total Score, Caucasian Candidates	N = 12 Range: 172-189 \bar{x} = 181.8	N = 14 Range: 160-189 \bar{x} = 175.0	N = 12 Range: 163-191 \bar{x} = 176.6
D. Total Score, Minority Candidates	N = 0 Range: \bar{x} = --	N = 0 Range: \bar{x} = --	N = 0 Range: \bar{x} = --
E. Total Score, First-Generation Candidates	N = 3 Range: 180-185 \bar{x} = 182.7	N = 4 Range: 175-181 \bar{x} = 178.3	N = 6 Range: 163-188 \bar{x} = 173.7
F. Total Score, non-First-Generation Candidates	N = 9 Range: 172-189 \bar{x} = 181.4	N = 10 Range: 160-189 \bar{x} = 173.9	N = 6 Range: 171-191 \bar{x} = 179.5
G. Total Score, Poor Candidates	N = 2 Range: 178-181 \bar{x} = 179.5	N = 7 Range: 160-189 \bar{x} = 177.2	N = 4 Range: 163-188 \bar{x} = 173.0
H. Total Score, Near Poor Candidates	N = 3 Range: 180-185 \bar{x} = 182.3	N = 3 Range: 172-176 \bar{x} = 174.0	N = 0 Range: \bar{x} = --
I. Total Score, Not Poor Candidates	N = 7 Range: 172-189 \bar{x} = 182.1	N = 4 Range: 160-179 \bar{x} = 173.0	N = 8 Range: 171-191 \bar{x} = 178.4

All minority candidates were African American, non-Hispanic. Students from poor families are defined as those living in families below the poverty threshold, based on family income and family size using the U.S. Census Bureau's poverty thresholds from the previous year for each of the candidate's entry term to the institution < <http://www.census.gov/data/tables/time-series/demo/income-poverty/historical-poverty-thresholds.html> >. Students from near-poor families are in families with incomes between 100 and 200 percent of the poverty threshold; students from not-poor families are in families with incomes 200 percent or greater (as defined by Child Trends DataBank, 2004).

All candidates successfully pass the required PRAXIS pedagogy prior to graduation.

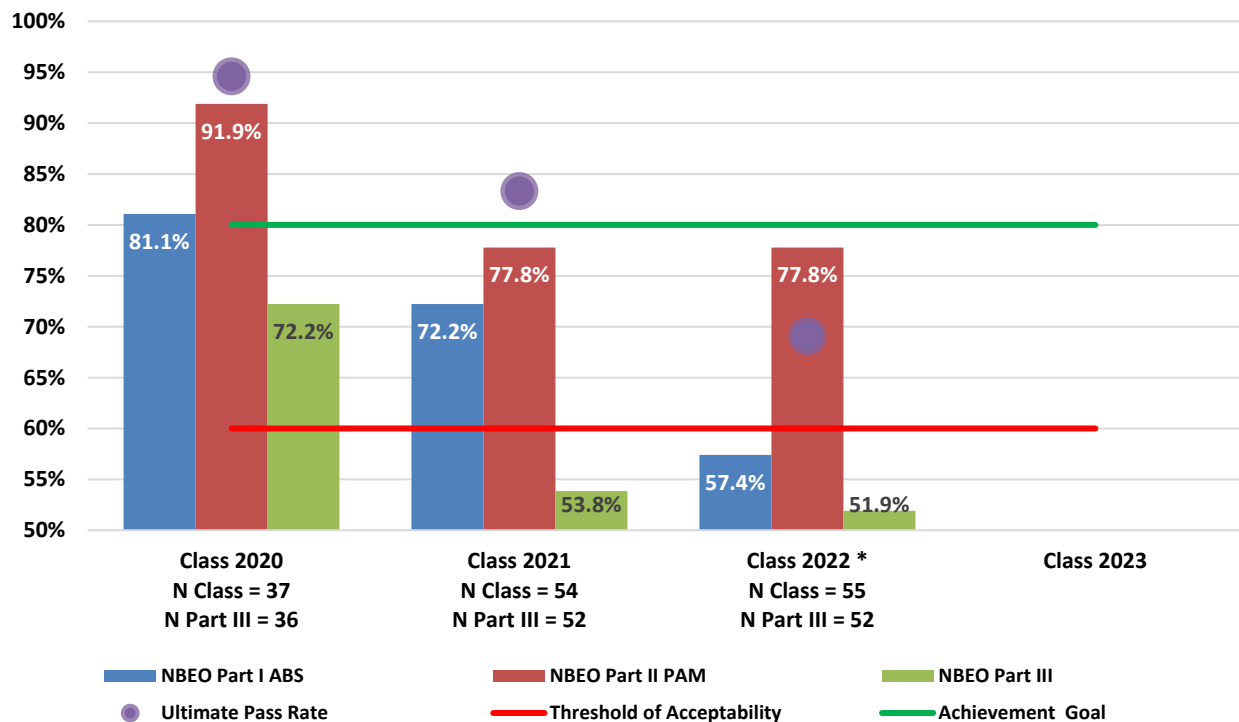


[< back to top >](#)

Doctor of Optometry Program

KYCO NBEO First-time Pass Rates by Class

Beginning November 15, 2021, while all matriculants continued to be encouraged to take and pass the National Board of Examiners in Optometry exams as they are the way to licensure in optometry, KYCO no longer requires that its optometry students pass the Part I (Applied Basic Science) Exam as part of their graduation requirements.



Source: Dean's Office, NBEO Board (01/19/2023)

* Does not include the student from the Class of 2020 or 2021 that had their degrees conferred in 2022. In 2022, the faculty of the Kentucky College of Optometry changed the graduation requirements for the Doctor of Optometry degree. This change allowed students from the Class of 2020 and 2021 to have their degrees conferred in 2022.

The ultimate pass rate is the number of students who eventually pass all three exams within 6 years of matriculating at KYCO.

First-time Pass Rates' Threshold of Acceptability was determined by the KYCO faculty based on the first three years of student performance (exam periods 2019, 2020, 2021) and the Achievement Goal is based on the national pass rate minimum expectation.

NOTE: The program's required current and reliable data is published on the website:

<https://www.upike.edu/optometry/admissions/student-performance-2021/>

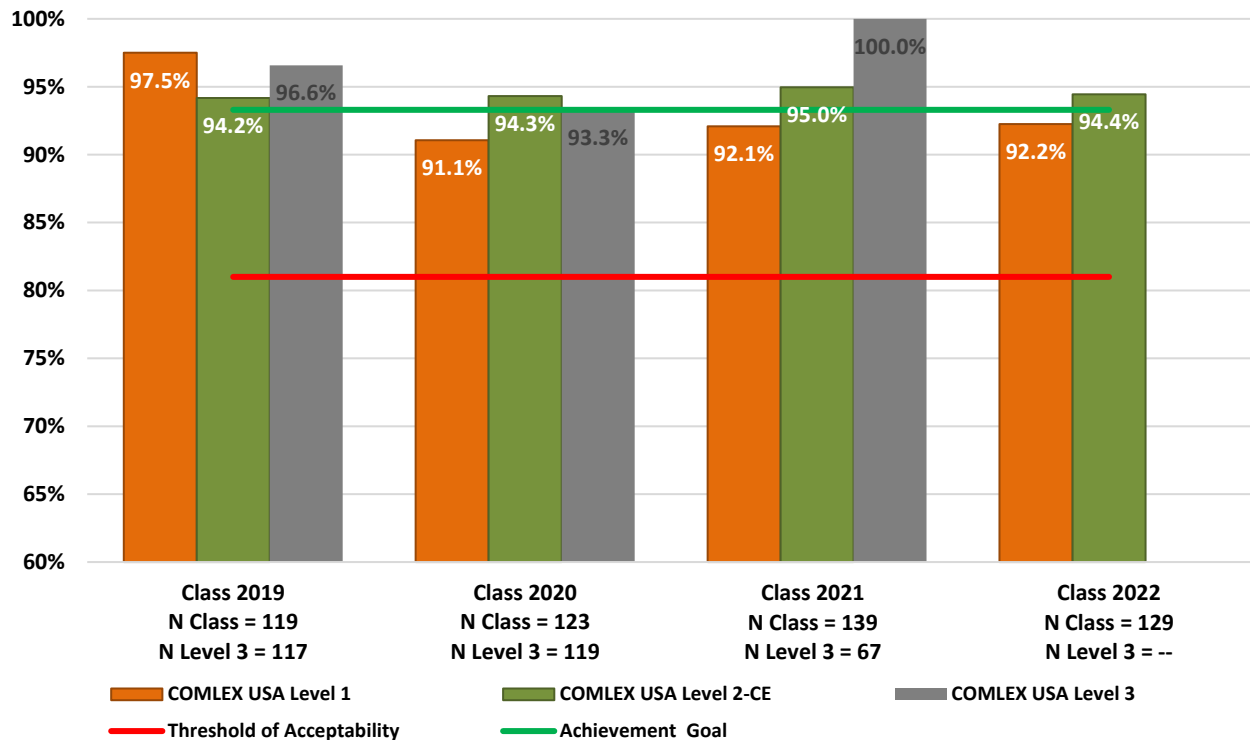
Analysis from Associate Dean, Kentucky College of Optometry, most recent annual report: At KYCO, we made several adjustments in the process of preparing our students for their preparation for the NBEO Part 1 examination given in March 2021. The Class of 2022 undertook an additional 2.0 credit hours of classroom work in Board Preparation courses. These courses included test question writing exercises and sample tests. Performance on sample tests in the past demonstrated high correlation with success on the NBEO courses for the previous classes. Our partnership with KMK Educational Services was extended to include one additional live review weekend for a total of four. These sessions also included pretests and are supplemented by study plans, study goals, flashcards, reading assignments, mock tests and live interaction.

< [back to top](#) >

Doctor of Osteopathic Medicine Program

KYCOM COMLEX First-time Pass Rates by Class

KYCOM requires that its medical students take and pass the COMLEX Levels 1 and 2 CE board examinations as part of their graduation requirements. Following graduation and as part of residency training, KYCOM graduates also must pass the COMLEX-USA Level 3 examination.



Source: Student Scores, National Board of Osteopathic Medical Examiners, Inc. (10/06/2022)

The Threshold of Acceptability Pass Rate is 81% (lower CI95, Classes 2013-2017) for COMLEX USA Levels 1 and 2-CE. The faculty-determined Achievement Goal First-time Pass Rate is the 4-year average National First-time Pass rate (93.3%) of program completers.

NOTE: The program's required current and reliable data is published on the website: <https://www.upike.edu/osteopathic-medicine/kycom-admissions/student-performance/>

Analysis from Associate Dean, Kentucky College of Osteopathic Medicine, most recent annual report: *As KYCOM implements the new integrated and case-based curriculum, we will rely more heavily upon data that is extrapolated from the COMSAE benchmark exams, required for all students at 10 days before they are scheduled to take the COMLEX examinations. Only ordinal data are available from the COMSAE, but this information will provide our only source of data to track the biomedical science disciplines (KYCOM's traditional metric for Outcome 3: Medical Knowledge). The COMSAE also yields ordinal data for NBOME Dimension 1 (AOA Competency Domains) and Dimension 2 (organ-system domains, as shown in the above graph). This process will provide continuity for ongoing DO Program evaluation in the future with the new patient-centered curriculum.*