

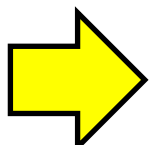
Student Achievement 2022

The University of Pikeville evaluates success with respect to undergraduate student achievement consistent with its [mission](#). The institution documents successful student achievement in relation to its mission by monitoring such broad measures as level of high impact practices, freshmen retention rate, number of degrees awarded, six-year baccalaureate graduation rate, and job placement rate. In addition, UPIKE measures student **achievement of academic excellence** by monitoring student performance rate in the specific programs of [Nursing](#), [Social Work](#), [Teacher Preparation](#), [Optometry](#), and [Osteopathic Medicine](#). The institution uses these findings to support and improve student achievement as part of its [strategic planning process](#).

Creating a Pathway to higher education for all students who desire to embark upon that journey and attracting and retaining high caliber students who will be future regional, national, and global leaders



To help students focus on educational success, UPIKE continues to strive to be an affordable and economical provider of postsecondary educational services to the people of the region. The University met this target by maintaining annual tuition and fees at a rate lower than those of the comparable institutions in Kentucky: [\\$22,650](#) for 2021-2022.



The University is striving to have at least 50% of its new freshmen have ACT-Composite scores at or above the national average. The University made no progress with only [48%](#) of the fall 2021 first-time freshmen having ACT-Composite scores of 21 or higher, which is lower than the fall 2018 and 2019 cohorts.

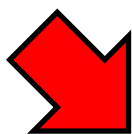


The University has programs in place to have at least 58% of its new freshmen return for their second year. The retention rate of first-time full-time freshmen to the University continued to meet this target for a fourth consecutive year with a [61%](#) rate for the fall 2020 cohort.

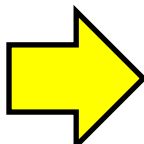
Preparing Graduates through quality academic programs, grounded in the liberal arts, and through involvement in community service, experiential learning, research, athletics, humanitarian efforts, and global outreach.



To prepare graduates, UPIKE strives for at least 85% of students to have participated in High-Impact Practices before graduation. The University lost ground on this target in Spring 2021 with [83%](#) of graduating seniors responding that they had participated in at least one such activity.



With the growth in undergraduate enrollment, the University seeks to have the number of undergraduate degrees awarded grow from 150 in 2010-2011 to 250 by 2020. UPIKE lost ground on this target with [226](#) undergraduate degrees awarded 2020-2021, a decrease from last year and an amount that is lower than each of the last four years.



The University wants to have at least 40% of its new freshmen graduate within six years. The six-year graduation rate of first-time freshmen to the University made no progress with the rate remaining at [33%](#) (fall 2015 cohort), the same as last year's cohort.



The University expects at least 80% of its graduates to be employed full time or enrolled in graduate school within one year of graduation. UPIKE met this target as [100%](#) of undergraduate graduates from the Class of 2020 found full-time employment or enrolled in graduate programs within one year after graduation.

Note: Similar information is available by undergraduate program by viewing the respective *Learn more about XXX graduates* popup on the University's website.

Statement of Mission

The University of Pikeville is the leading higher education institution of Central Appalachia. Founded in 1889, UPIKE remains steadfast in our commitment to preparing students for the future while creating intellectual, cultural, and economic opportunities for Appalachia. Maintaining our commitment to Christian principles, UPIKE recognizes the infinite worth of each person, respecting a variety of religious expressions.

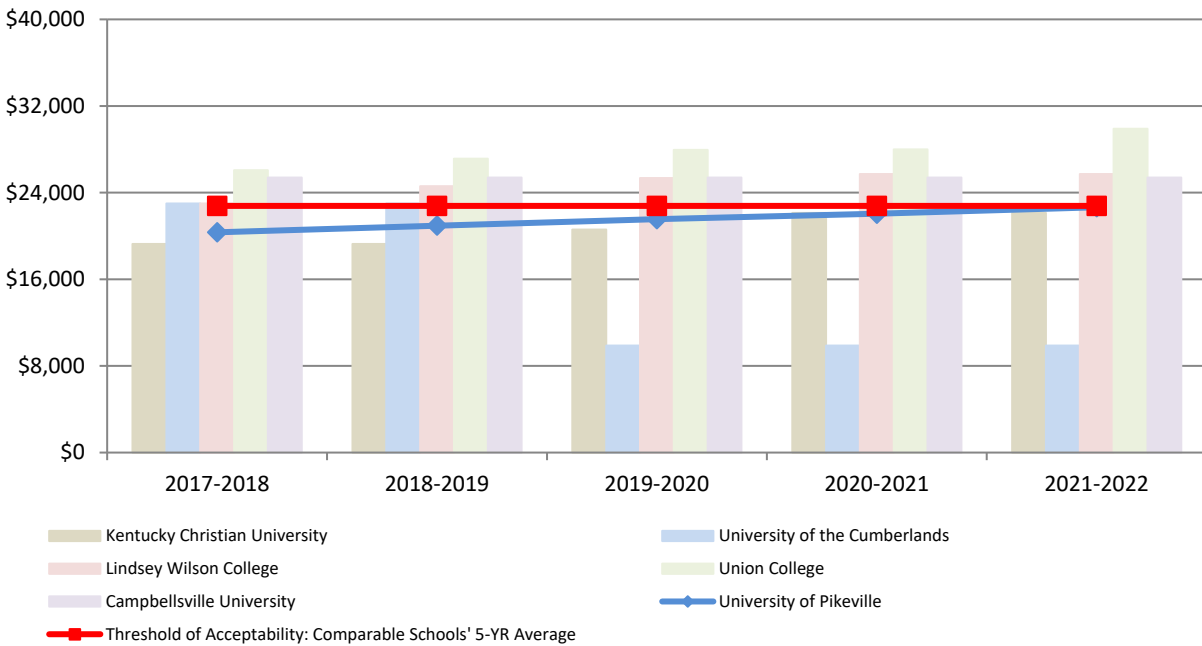
UPIKE achieves its mission by:

- Creating a pathway to higher education for all students who desire to embark upon that journey and attracting and retaining high caliber students who will be future regional, national, and global leaders.
- Preparing graduates through quality academic programs, grounded in the liberal arts, and through involvement in community service, experiential learning, research, athletics, humanitarian efforts, and global outreach.
- Achieving academic excellence by maintaining academic rigor and relevancy in undergraduate, graduate, and professional degree programs.
- Attracting and retaining distinguished faculty, staff, administrators, trustees, and alumni who are dedicated to meeting the individual needs of students, promoting a caring and supportive environment conducive to learning, and meeting the needs of an evolving University; and
- Providing superior infrastructure with state-of-the-art classrooms, clinics, instructional materials, physical facilities, technological infrastructure and campus amenities through sound fiscal policy and efficient and effective administrative services.

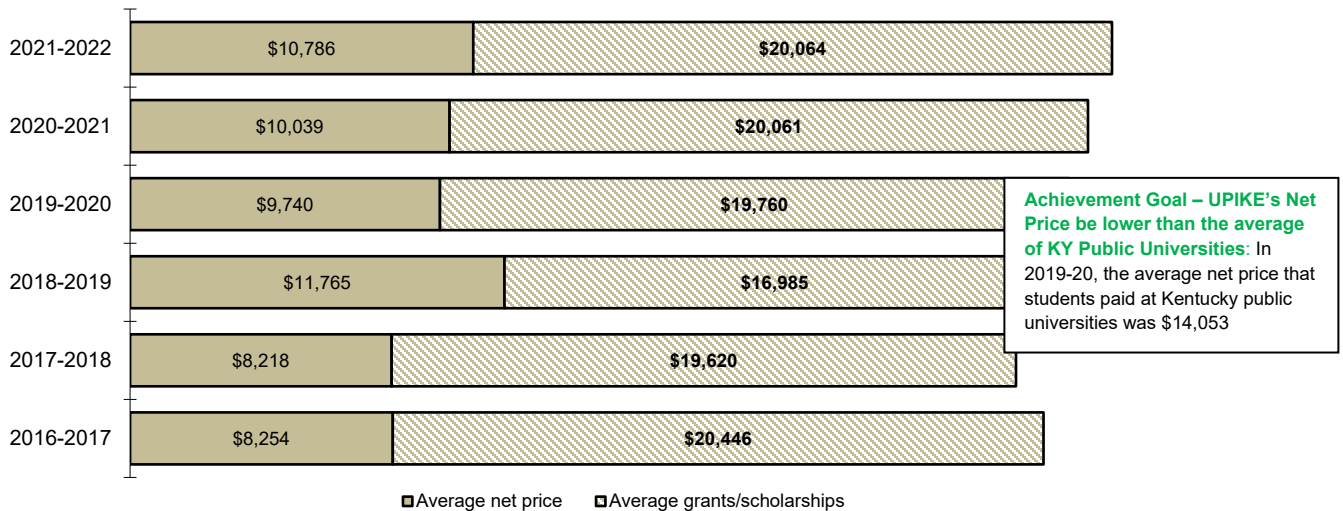
< [back to top](#) >

Creating a Pathway Outcome 1

Tuition Costs



College Net Price, UPIKE

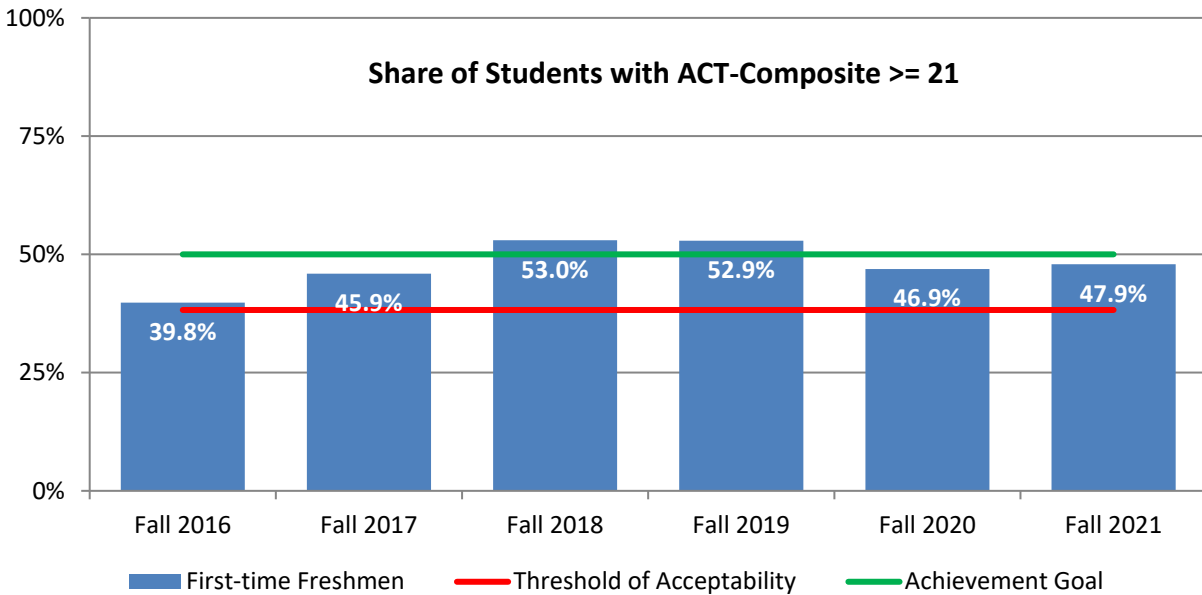


Total Disbursements (AID060 reports) for academic years 2017-2021 calculated only on those full-time undergraduate students who were enrolled at least nine months who lived on campus. AY 2022 figures (from AID060 report 10/18/2021) are estimates based on awards and fall 2020 undergraduate student enrollment intentions. Totals do not include self-help aid (e.g., work study or student loans). State data from IPEDS Data Center (11/23/2021).

[< back to top >](#)

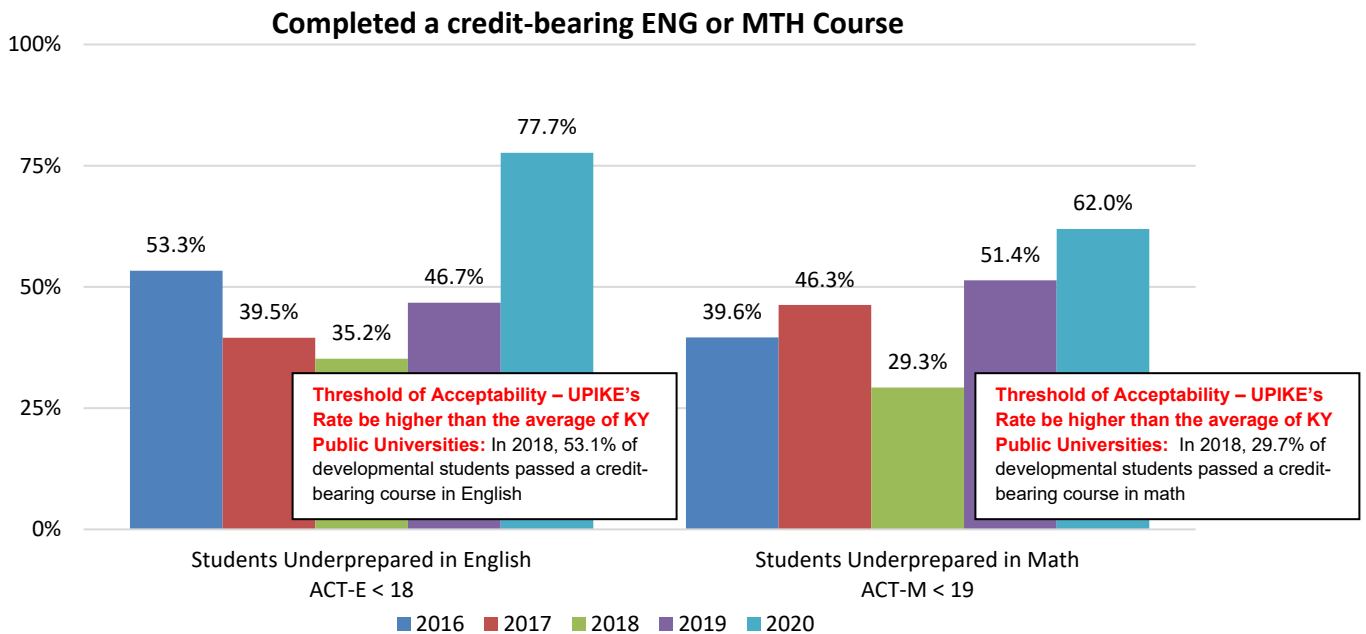
Creating a Pathway Outcome 2

Attracting High Caliber Undergraduate Students



The Threshold of Acceptability Rate is 38.2% which is the average for new freshmen entering the University from 2000-2015. The Achievement Goal Rate is 50%.

Progress of Underprepared UPIKE Students

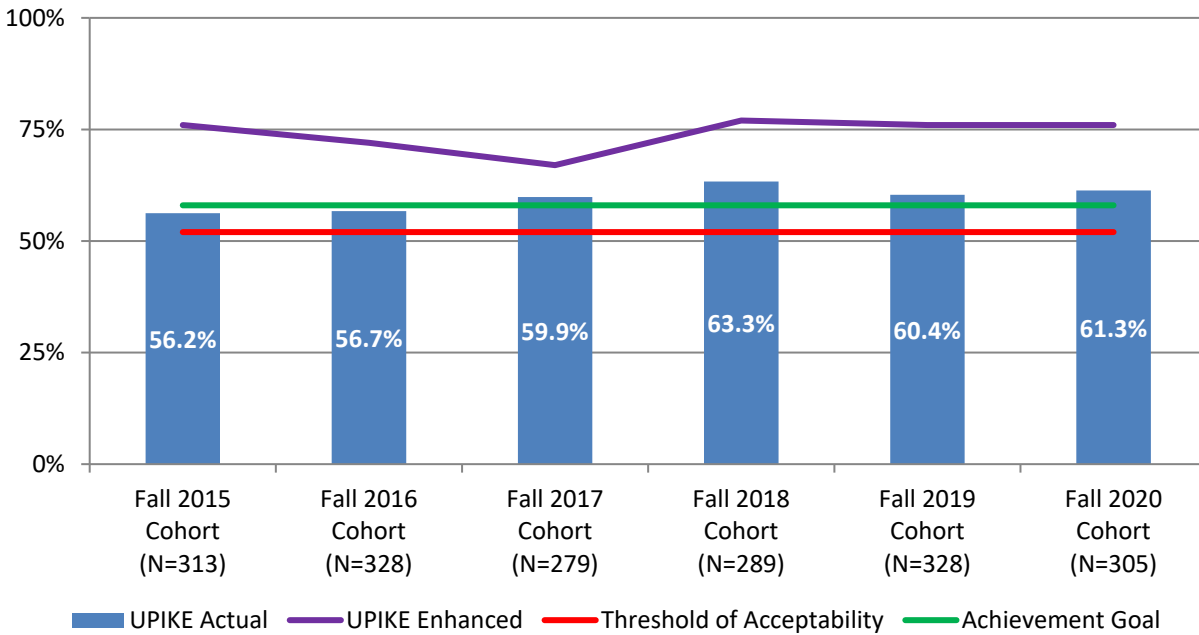


The percentage of first-time, full-time undergraduate degree and credential-seeking students who are underprepared in English or Mathematics (according to the statewide college readiness standards) who complete a credit-bearing course in English/Math by the end of the fall semester a year after entry. Successful course completion is defined as an A, B, C, D or P. State data from Progress Report (April, 2018) <http://cpe.ky.gov/data/reports/2020progressreporthighlights.pdf>.

Note: UPIKE stopped offering developmental students remedial courses in English and math with the spring 2020 semester and began implementing supplemental instruction.

Creating a Pathway Outcome 3

Retention Rates by Cohort



The Enhanced Retention Rate includes students who not only returned to the University of Pikeville, but who were reported to have enrolled within this time frame by the National Student Clearinghouse at another institution of higher education.

The Threshold of Acceptability Retention Rate is 52% which was the baseline in our Title III Strengthening Institutions Grant for new freshmen entering the University.

The Achievement Goal Retention Rate is 58% which was the goal expressed after 5 years in our Title III Strengthening Institutions Grant for new freshmen entering the University.

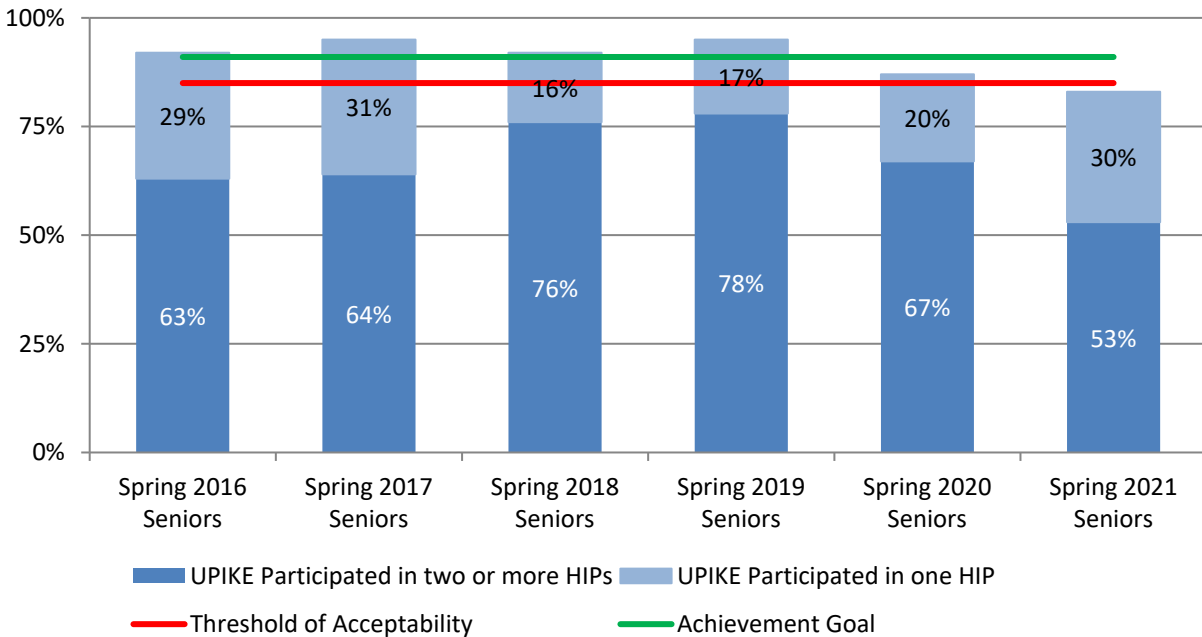
Retention Rates for Full-Time New Freshmen by Sub-group

	Fall 2015	Fall 2016	Fall 2017	Fall 2018	Fall 2019	Fall 2020
<u>Gender</u>						
Male	54%	54%	54%	58%	53%	50%
Female	59%	60%	67%	68%	70%	71%
<u>Race/Ethnicity</u>						
White	60%	57%	61%	63%	62%	65%
Black, Non-Hispanic	45%	47%	53%	63%	54%	38%
Other	41%	80%	53%	67%	57%	56%
<u>Financial Aid Recipients</u>						
Pikeville Promise	60%	53%	56%	62%	59%	57%
Pell Grant	55%	52%	58%	62%	58%	57%
Subsidized Stafford Loan, no Pell	49%	57%	62%	67%	61%	69%
Neither Pell or Sub Stafford Loan	67%	79%	66%	67%	69%	69%

[< back to top >](#)

Preparing Graduates Outcome 1

High-Impact Practice Participation by Class



Figures include participation in a learning community, service-learning, and research with faculty, an internship or field experience, study abroad, and culminating senior experience. The first segment in each bar shows the percentage of students who participated in at least two HIPs, and the full bar (both colors) represents the percentage who participated in at least one.

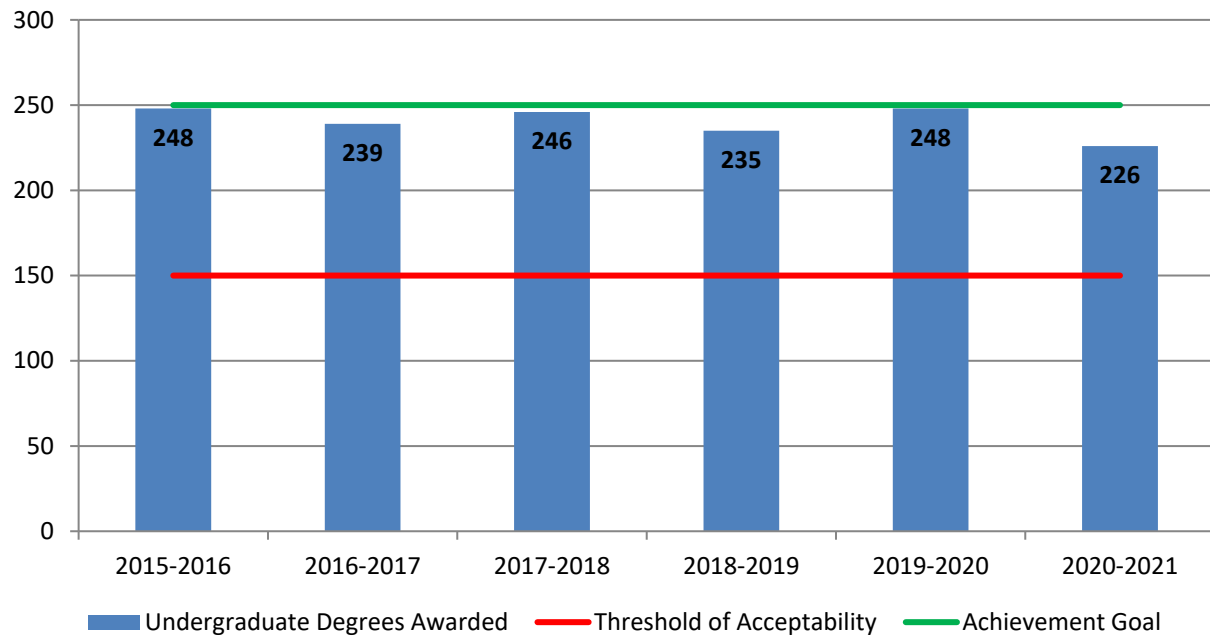
The Threshold of Acceptability Participation Rate is based on the baseline in our QEP from 2012.

The Achievement Goal Participation Rate is the average participation rate in at least one HIP activity for all other NSSE participating small private schools in the SE United States, 2020

< [back to top](#) >

Preparing Graduates Outcome 2

Number of Undergraduate Degrees Awarded by Year



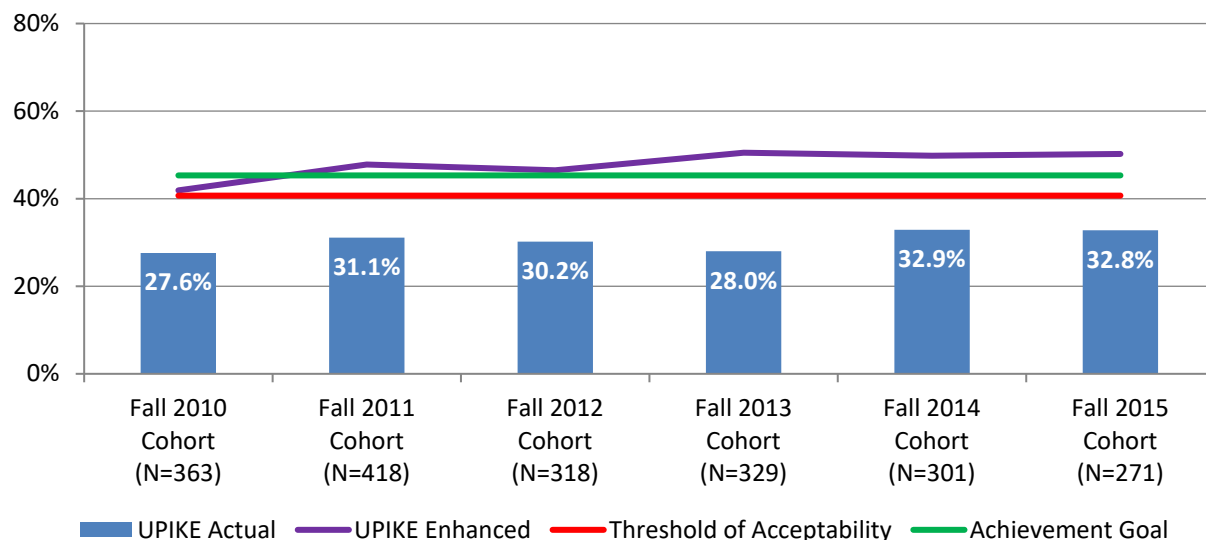
The Threshold of Acceptability number of degrees is based on the number of degrees award in 2010-2011, the time of the writing of the *Vision 2020* document.

The Achievement Goal number of degrees comes from the *Vision 2020* document.

< [back to top](#) >

Preparing Graduates Outcome 3

Graduation Rates by Cohort



The Enhanced Graduation Rate includes students who not only graduated from the University of Pikeville, but who were reported to have graduated within this time frame by the National Student Clearinghouse at another institution of higher education.

The Threshold of Acceptability Graduation Rate threshold is the average graduation rate reported to US News for the 2021 survey for the custom comparison group chosen by University of Pikeville of 11 institutions [Alice Lloyd College (KY), Brescia University (KY), Campbellsville University (KY), Kentucky Christian University, Kentucky Wesleyan College, Lincoln Memorial University (TN), Lindsey Wilson College (KY), Morehead State University (KY), Union College (KY), University of the Cumberlands (KY), William Carey University (MS)].

The Achievement Goal Graduation Rate is the average graduation rate for small private schools (enrollments under 5,000) in the SE United States, IPEDS Data Center from most recent reporting date (Aug 31, 2017).

Graduation Rates for Full-Time, Baccalaureate Degree-seeking New Freshmen by Sub-group

	Fall 2010	Fall 2011	Fall 2012	Fall 2013	Fall 2014	Fall 2015
<u>Gender</u>						
Male	22%	20%	28%	21%	28%	28%
Female	37%	46%	37%	37%	40%	38%
<u>Race/Ethnicity</u>						
White	29%	34%	32%	33%	37%	36%
Black, Non-Hispanic	16%	14%	21%	6%	12%	25%
Other	33%	18%	32%	41%	27%	20%
<u>Financial Aid Recipients</u>						
Pikeville Promise	26%	30%	11%	23%	31%	42%
Pell Grant	25%	28%	24%	23%	25%	32%
Subsidized Stafford Loan, no Pell	29%	31%	36%	35%	44%	26%
Neither Pell or Sub Stafford Loan	35%	42%	47%	44%	52%	40%

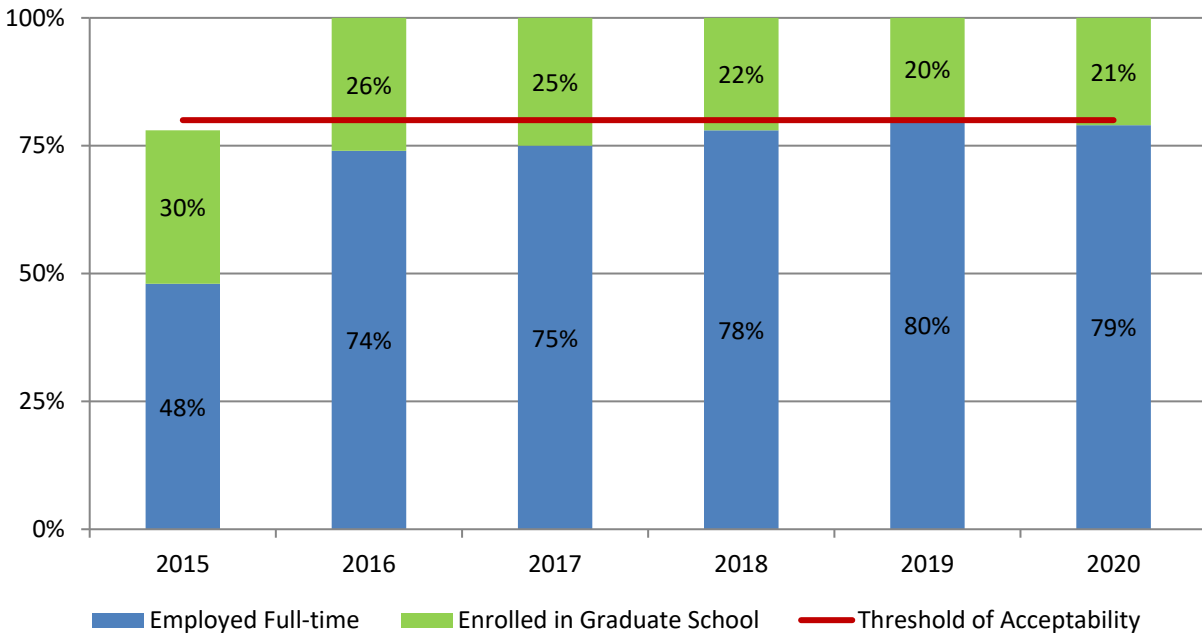
Selected SACSCOC Student Completion Indicator:

University of Pikeville	
Selected Student Completion Indicator: 6-year National Student Clearinghouse Total Completion Rate (As of: November 2016)	
Your Institution	49.3%
Peer Group's Average	52.6%
Number of peers your institution identified	11
Number of peers for which data available	6

< [back to top](#) >

Preparing Graduates Outcome 4

Placement Rates by Class



Data comes from University of Pikeville Alumni Survey One Year after Graduation. Percentages based on unduplicated responses. The Threshold of Acceptability Placement Rate is 80% of graduates as determined by the University Planning Committee. The Achievement Goal Placement Rate is 100%.

Gainful Employment Information of Graduates

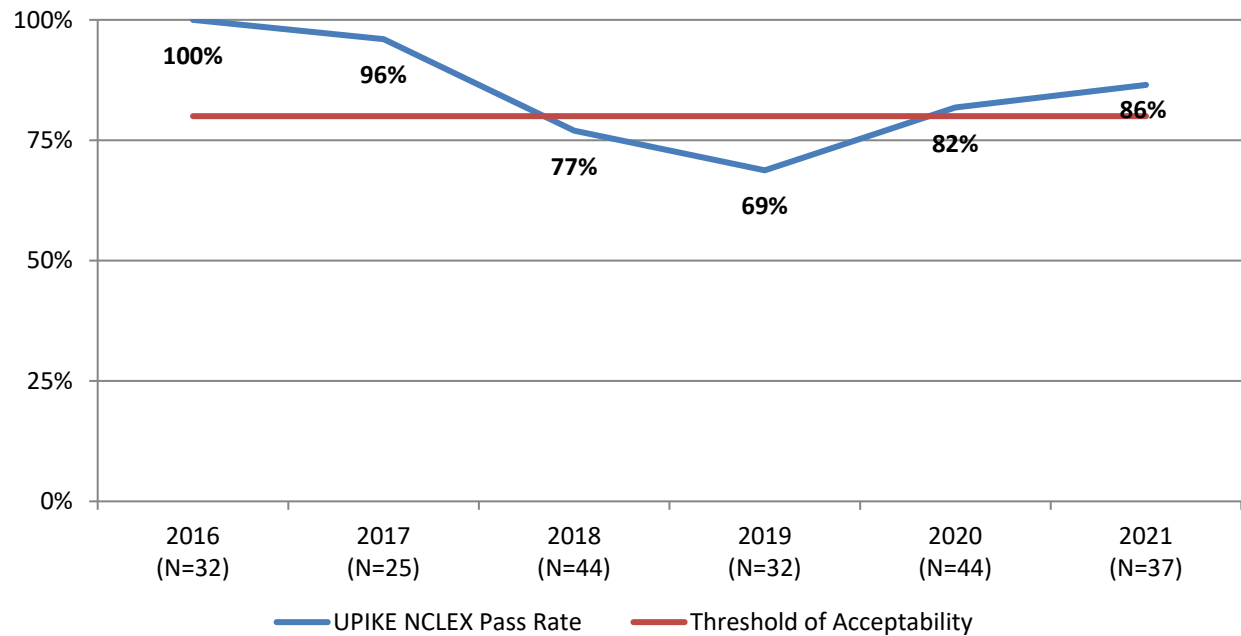
Graduating Class	2015	2016	2017	2018	2019	2020
Share of Bachelor degrees – UPIKE Initial Institution	63%	64%	60%	70%	57%	58%
On-time Graduation Rate	44%	53%	63%	59%	65%	62%
Students who Took out Loans	80%	82%	72%	77%	79%	82%
Median Loan Debt for those Students	\$25,734	\$25,732	\$25,482	\$24,742	\$24,054	\$25,059
Median KY Wages 3 Years Post Graduation ¹	\$27,129	TBA				
Employed in KY 3 Years Post Graduation ¹	52%	61%				
<i>Debt-to-Earnings Annual Rate ²</i>	13.1%					

Note: (1) This information comes from the Postsecondary Feedback Report (PSFR) that was last updated March, 2021, Kentucky Center for Education & Workforce Statistics, 603 Wilkinson Blvd, Frankfort, KY. (Retrieved 10/27/2021 https://kcews.ky.gov/Reports/Tableau/2021_MSPSR)
 (2) The Department of Education's passing threshold for this rate is for it to be less than or equal to 8%; failing is greater than 12%.

< [back to top](#) >

Associate Degree of Nursing Program

UPIKE NCLEX First-time Pass Rates by Class



The Threshold of Acceptability Pass Rate is 80% of program completers, which is the Kentucky minimum required pass rate.

The Achievement Goal Pass Rate is 100%.

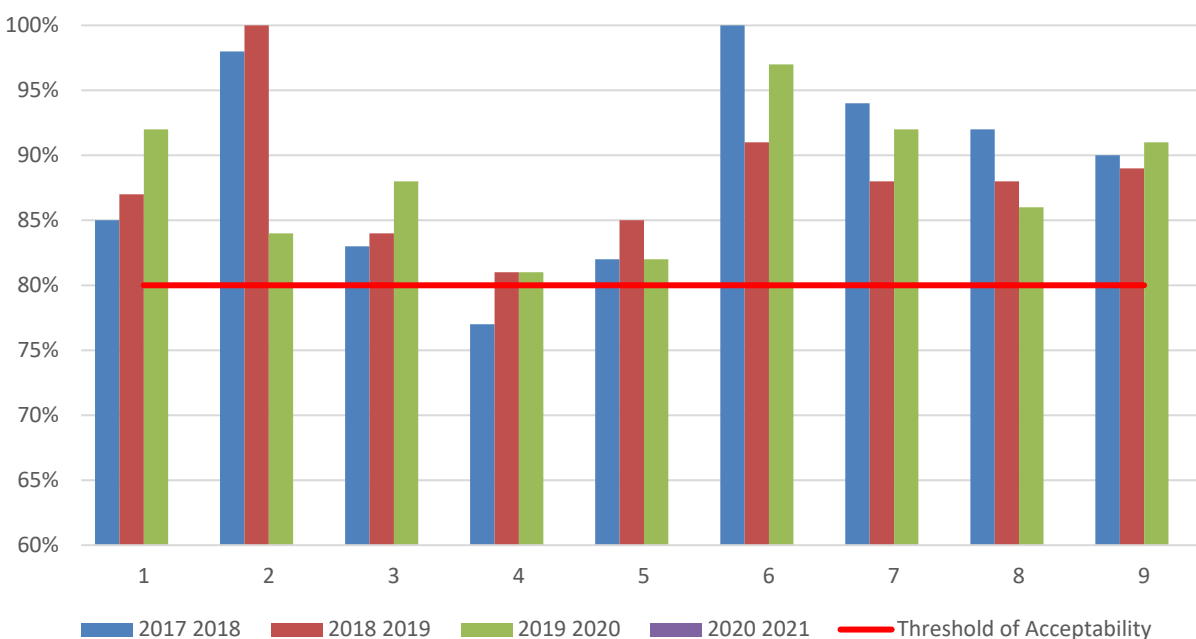
< [back to top](#) >

Social Work Program, Baccalaureate Level

Share of the Competencies that UPIKE Graduates Achieved Benchmarks: Comprehensive Exam and Practicum Student Final Evaluation by Supervisors

	2017 2018	2018 2019	2019 2020	2020 2021
Competency 1: Demonstrate Ethical and Professional Behavior	85%	87%	92%	---
Competency 2: Engage Diversity and Difference in Practice	98%	100%	84%	---
Competency 3: Advance Human Rights and Social, Economic, and Environmental Justice	83%	84%	88%	---
Competency 4: Engage in Practice Informed Research and Research Informed Practice	77%	81%	81%	---
Competency 5: Engage in Policy Practice	82%	85%	82%	---
Competency 6: Engage with Individuals, Families, Groups, Organizations, and Communities	100%	91%	97%	---
Competency 7: Assess Individuals, Families, Groups, Organizations and Communities	94%	88%	92%	---
Competency 8: Intervene with Individuals, Families, Groups, Organizations, and Communities	92%	88%	86%	---
Competency 9: Evaluate Practice with Individuals, Families, Groups, Organizations, and Communities	90%	89%	91%	---
Number of Graduates:	10	9	8	1

The faculty determined Threshold of Acceptability to be that students will demonstrate mastery (achieve benchmark) in 80% of each competency. The Achievement Goal is 100% of students demonstrating mastery.



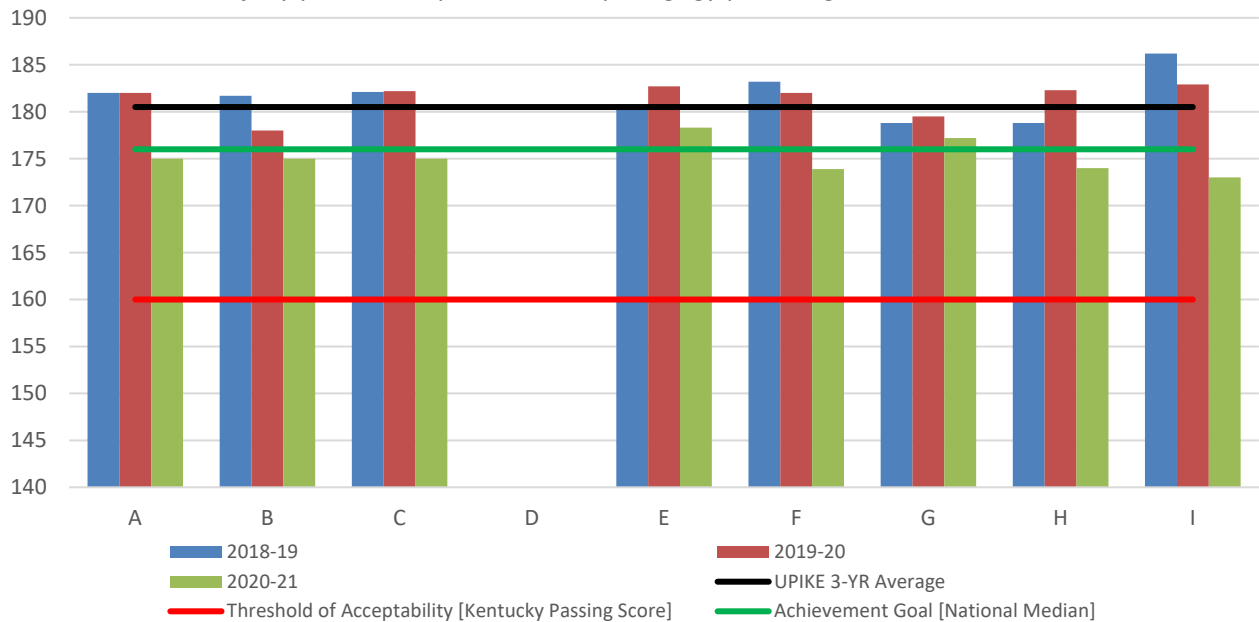
Traditional Teacher Preparation Program

UPIKE Principles of Teaching and Learning (Pedagogy Test), All Levels, by Class

	2018-19	2019-20	2020-21
Total Score, All Candidates	N = 18 \bar{x} = 182 Range: 171-193	N = 12 \bar{x} = 183 Range: 175-189	N = 14 \bar{x} = 175 Range: 160-189
A. Total Score, Female Candidates	\bar{x} = 182.1 Range: 171-193	\bar{x} = 183.1 Range: 175-189	N = 12 \bar{x} = 175.0 Range: 160-189
B. Total Score, Male Candidates	\bar{x} = 181.7 Range: 173-187	\bar{x} = 178.0 Range: 173-187	N = 2 \bar{x} = 175 Range: 172-178
C. Total Score, Caucasian Candidates	\bar{x} = 182.1 Range: 171-193	\bar{x} = 182.6 Range: 175-189	N = 14 \bar{x} = 175.0 Range: 160-189
D. Total Score, Minority Candidates	\bar{x} = -- Range: --	\bar{x} = -- Range: --	N = 0 \bar{x} = -- Range: --
E. Total Score, First-Generation Candidates	\bar{x} = 180.6 Range: 171-188	\bar{x} = 182.3 Range: 180-185	N = 4 \bar{x} = 178.3 Range: 175-181
F. Total Score, non-First-Generation Candidates	\bar{x} = 183.2 Range: 171-193	\bar{x} = 182.9 Range: 175-189	N = 10 \bar{x} = 173.9 Range: 160-189
G. Total Score, Poor Candidates	\bar{x} = 182.5 Range: 174-187	\bar{x} = 179.5 Range: 178-181	N = 7 \bar{x} = 177.2 Range: 160-189
H. Total Score, Near Poor Candidates	\bar{x} = 175.8 Range: 171-185	\bar{x} = 182.5 Range: 180-185	N = 3 \bar{x} = 174.0 Range: 172-176
I. Total Score, Not Poor Candidates	\bar{x} = 186.1 Range: 180-193	\bar{x} = 183.6 Range: 175-189	N = 4 \bar{x} = 173.0 Range: 160-179

All minority candidates were African American, non-Hispanic. Students from poor families are defined as those living in families below the poverty threshold, based on family income and family size using the U.S. Census Bureau's poverty thresholds from the previous year for each of the candidate's entry term to the institution < <http://www.census.gov/data/tables/time-series/demo/income-poverty/historical-poverty-thresholds.html> >. Students from near-poor families are in families with incomes between 100 and 200 percent of the poverty threshold; students from not-poor families are in families with incomes 200 percent or greater (as defined by Child Trends DataBank, 2004).

All candidates successfully pass the required PRAXIS pedagogy prior to graduation.

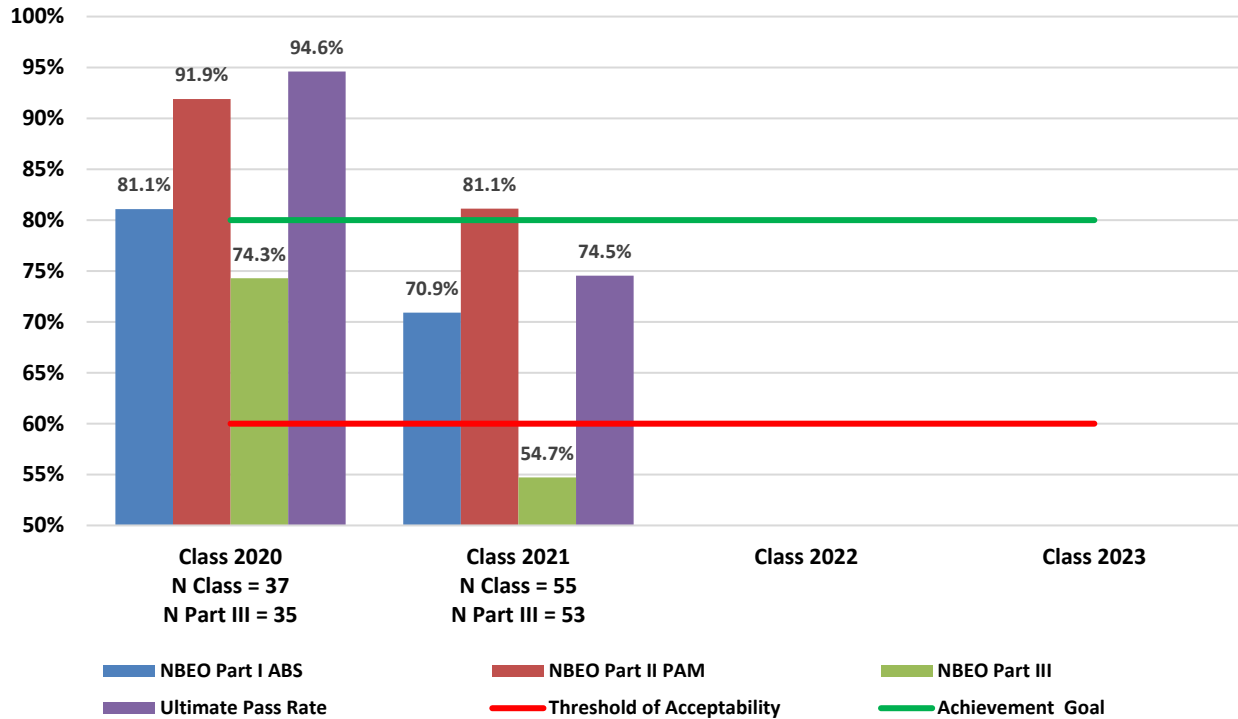


< [back to top](#) >

Doctor of Optometry Program

KYCO NBEO First-time Pass Rates by Class

Beginning November 15, 2021, while all matriculants continued to be encouraged to take and pass the National Board of Examiners in Optometry exams as they are the way to licensure in optometry, KYCO no longer requires that its optometry students pass the Part I (Applied Basic Science) Exam as part of their graduation requirements.



Source: Dean's Office, NBEO Board (09/27/2021)

The ultimate pass rate is the number of students who eventually pass all three exams within 6 years of matriculating at KYCO.

First-time Pass Rates' Threshold of Acceptability is based on the KYCO faculty based on the first three years of student performance (exam periods 2019, 2020, 2021) and the Achievement Goal is based on the national pass rate minimum expectation.

Not all students who attempt NBEO examinations graduate from KYCO. In addition, exam testing periods do not always coincide with final KYCO graduation cohorts. First-time pass rates on NBEO examinations for all KYCO students who attempted the examinations during these testing periods are as follows:

FIRST TIME BOARD PASS RATES

	NBE0 Part 1	NBE0 Part 2	NBE0 Part 3	Ultimate Pass Rate
Entering class of 2020	53.3%	72.1%	70.27%	91.89%
Entering class of 2021	64.81%	79.63%	57.41%	81.48%

Entering class of 2022

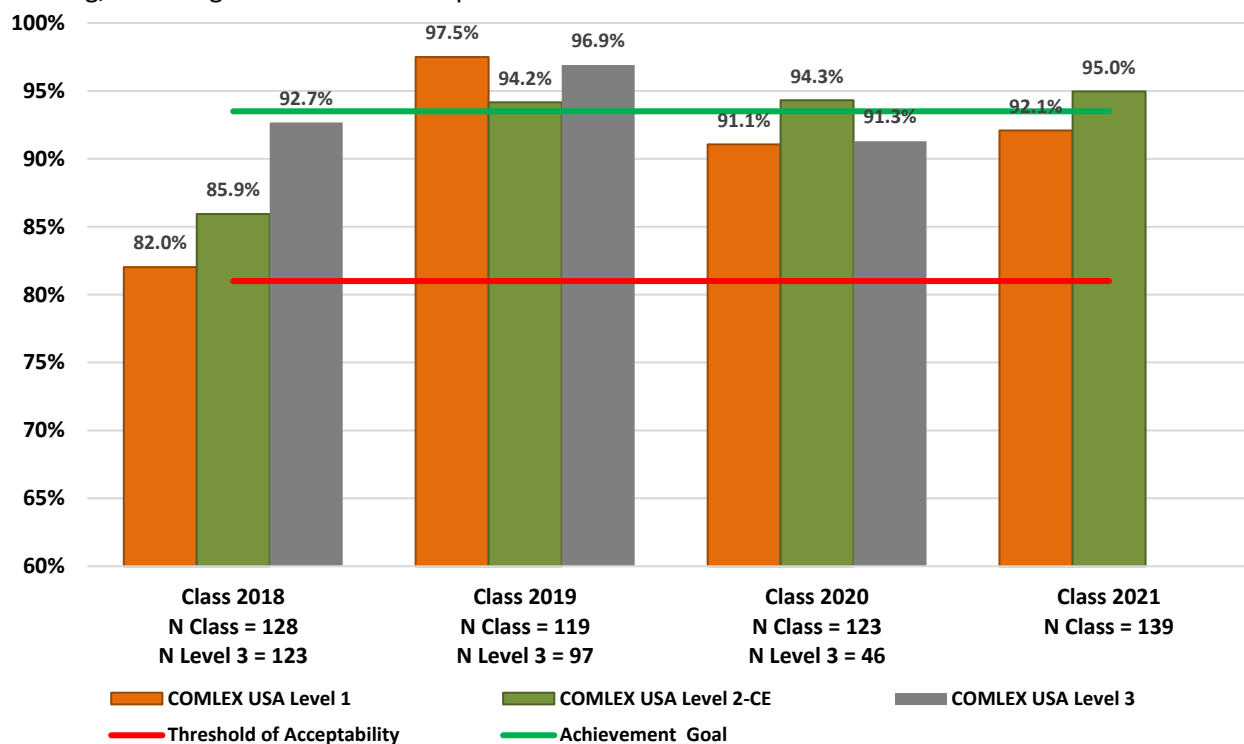
Source: <https://www.upike.edu/optometry/admissions/student-performance-2021/>

< [back to top](#) >

Doctor of Osteopathic Medicine Program

KYCOM COMLEX First-time Pass Rates by Class

KYCOM requires that its medical students take and pass the COMLEX Levels 1 and 2 CE board examinations as part of their graduation requirements. Following graduation and as part of residency training, KYCOM graduates also must pass the COMLEX-USA Level 3 examination.



Source: Student Scores, National Board of Osteopathic Medical Examiners, Inc. (09/24/2021)

The Threshold of Acceptability Pass Rate is 81% (lower CI95, Classes 2013-2017) for COMLEX USA Levels 1 and 2-CE. The faculty-determined Achievement Goal First-time Pass Rate is the 4-year average National First-time Pass rate (93.5%) of program completers.

Not all students who attempt COMLEX examinations graduate from KYCOM. In addition, exam testing periods do not always coincide with final KYCOM graduation cohorts. First-time pass rates on COMLEX examinations for all KYCOM students who attempted the examinations during these testing periods are as follows:

KYCOM COMLEX First-Time Pass Rates:

	2017-2018	2018-2019	2019-2020	2020-2021
COMLEX Level 1	97.6%	85.5%	93.9%	95.3%
COMLEX Level 2-CE	87.6%	92.9%	93.6%	95.6%
COMLEX Level 2-PE	87.8%	92.9%	92.6%	Clinical Skill Attestations
COMLEX Level 3	89.5%	95.1%	92.9%	Not yet available

Source: <https://www.upike.edu/osteopathic-medicine/kycom-admissions/student-performance/>

< [back to top](#) >